

Berlin Centra School District Appropriation Report 2026-2027 General Fund Summary Report

Account	Description	2026 - 2027 Proposed	2025 - 2026 Budget	\$ Change	% Change
1010	BOARD OF EDUCATION *	33,560	29,950	3,610	12.05%
1040	DISTRICT CLERK *	20,470	6,050	14,420	238.35%
1240	OFFICE OF SUPERINTENDENT *	284,224	261,958	22,266	8.50%
1310	BUSINESS ADMINISTRATION *	349,119	372,176	-23,057	-6.20%
1320	AUDITING *	24,445	29,160	-4,715	-16.17%
1325	TREASURER *	103,206	101,131	2,075	2.05%
1330	TAX COLLECTOR *	31,434	30,559	875	2.86%
1345	PURCHASING *	9,750	12,922	-3,172	-24.55%
1380	FISCAL AGENT FEE *	5,000	2,750	2,250	81.82%
1420	LEGAL *	181,000	146,100	34,900	23.89%
1430	PERSONNEL *	17,600	20,100	-2,500	-12.44%
1460	RECORDS MANAGEMENT *	18,500	19,480	-980	-5.03%
1480	PUBLIC INFORMATION & SERVICES *	78,007	68,879	9,128	13.25%
1620	OPERATION OF PLANT *	1,211,954	1,161,029	50,925	4.39%
1621	MAINTENANCE OF PLANT *	647,081	528,290	118,791	22.49%
1622	SECURITY & LIFE SYSTEMS *	3,950	3,190	760	23.82%
1670	CENTRAL PRINTING & MAILING *	54,620	67,630	-13,010	-19.24%
1680	CENTRAL DATA PROCESSING *	185,076	287,475	-102,399	-35.62%
1910	UNALLOCATED INSURANCE *	105,074	100,009	5,065	5.06%
1920	SCHOOL ASSOCIATION DUES *	2,000	0	2,000	100.00%
1981	BOCES ADMINISTRATIVE COSTS *	179,073	187,622	-8,549	-4.56%
2010	CURRICULUM DEVEL & SUPERVISION *	10,500	22,834	-12,334	-54.02%
2020	SUPERVISION - REGULAR SCHOOL *	433,473	420,252	13,221	3.15%
2040	SUPERVISION - SPECIAL SCHOOLS *	197,092	200,285	-3,193	-1.59%
2070	INSERVICE TRAINING-INSTRUCTION *	113,619	127,250	-13,631	-10.71%
2110	TEACHING - REGULAR SCHOOL *	4,893,378	4,927,545	-34,167	-0.69%
2250	STUDENTS with DISABILITIES *	4,281,603	4,221,045	60,558	1.43%
2280	OCCUPATIONAL EDUCATION *	633,226	609,295	23,931	3.93%
2330	Teaching- Special Schools *	46,150	32,538	13,612	41.83%
2610	SCHOOL LIBRARY & AUDIOVISUAL *	122,616	124,602	-1,986	-1.59%
2620	TECHNOLOGY INTEGRATION *	142,100	48,250	93,850	194.51%
2630	COMPUTER ASSISTED INSTRUCTION *	564,221	573,984	-9,763	-1.70%
2810	GUIDANCE - REGULAR SCHOOL *	435,506	443,461	-7,955	-1.79%
2815	HEALTH SERVICES - REGULAR SCHOOL *	193,495	215,903	-22,408	-10.38%
2820	PSYCHOLOGICAL SERVICE - REG SCHOOL	152,850	154,852	-2,002	-1.29%
2825	SOCIAL WORK SERVICE - REG SCHOOL *	114,600	114,600	0	0.00%
2850	CO-CURRICULAR ACTIVITIES *	81,250	96,500	-15,250	-15.80%
2855	INTERSCHOLASTIC ATHLETICS *	227,500	227,558	-58	-0.03%
5510	DISTRICT TRANSPORTATION *	1,718,213	1,714,813	3,400	0.20%
5530	GARAGE BUILDING *	87,460	103,543	-16,083	-15.53%
9010	STATE RETIREMENT *	550,446	570,000	-19,554	-3.43%
9020	TEACHERS' RETIREMENT *	950,000	950,000	0	0.00%
9030	SOCIAL SECURITY *	975,000	975,000	0	0.00%
9040	WORKERS' COMPENSATION *	55,096	51,785	3,311	6.39%
9050	UNEMPLOYMENT INSURANCE *	40,000	40,000	0	0.00%
9060	HOSPITAL, MEDICAL & DENTAL INS *	4,063,500	3,705,684	357,816	9.66%
9089	OTHER FRINGE BENEFITS *	89,375	20,900	68,475	327.63%
9711	DEBT PRINCIPAL	1,588,238	1,588,088	150	0.01%
9732	DEBT INTEREST	339,030	403,432	-64,402	-15.96%
9900	INTERFUND TRANSFERS *	155,000	145,000	10,000	6.90%
<b>Grand Totals:</b>		<b>2026-2027 BUDGET</b>	<b>2025-2026 BUDGET</b>	<b>\$ Change</b>	<b>% Change</b>
		<b>26,799,680</b>	<b>26,266,209</b>	<b>533,471.00</b>	<b>2.03%</b>

BERLIN CENTRAL SCHOOL DISTRICT

Three Part Budget

Account	Description	ADMIN	CAPITAL	PROGRAM
1010	BOARD OF EDUCATION *	\$33,560		
1040	DISTRICT CLERK *	\$20,470		
1240	Office of the Superintendent *	\$284,224		
1310	BUSINESS ADMINISTRATION *	\$349,119		
1320	AUDITING *	\$24,445		
1325	TREASURER *	\$103,206		
1330	TAX COLLECTOR *	\$31,434		
1345	PURCHASING *	\$9,750		
1380	FISCAL AGENT FEE *	\$5,000		
1420	LEGAL *	\$181,000		
1430	PERSONNEL *	\$17,600		
1460	RECORDS MANAGEMENT *	\$18,500		
1480	PUBLIC INFORMATION & SERVICES **	\$78,007		
1620	OPERATION OF PLANT *		\$1,211,954	
1621	MAINTENANCE OF PLANT *	\$95,000	\$552,081	
1622	SECURITY & LIFE SYSTEMS *		\$3,950	
1670	CENTRAL PRINTING & MAILING *	\$54,620		
1680	CENTRAL DATA PROCESSING *	\$185,076		
1910	UNALLOCATED INSURANCE *	\$105,074		
1920	SCHOOL ASSOCIATION DUES *	\$2,000		
1981	BOCES ADMINISTRATIVE COSTS *	\$179,073		
2010	CURRICULUM DEVEL & SUPERVISION *	\$10,500		
2020	SUPERVISION - REGULAR SCHOOL *	\$433,473		
2040	SUPERVISION - SPECIAL SCHOOLS *	\$197,092		
2070	INSERVICE TRAINING-INSTRUCTION *	\$113,619		
2110	TEACHING - REGULAR SCHOOL *			\$4,893,378
2250	STUDENTS with DISABILITIES *			\$4,281,603
2280	OCCUPATIONAL EDUCATION *			\$633,226
2330	Teaching- Special Schools *			\$46,150
2610	SCHOOL LIBRARY & AUDIOVISUAL *			\$122,616
2620	TECHNOLOGY INTEGRATION *			\$142,100
2630	COMPUTER ASSISTED INSTRUCTION *	\$80,680		\$483,541
2810	GUIDANCE - REGULAR SCHOOL *			\$435,506
2815	HEALTH SERVICES - REGULAR SCHOOL *			\$193,495
2820	PSYCHOLOGICAL SERVICE - REG SCHOOL *			\$152,850
2825	SOCIAL WORK SERVICE - REG SCHOOL *			\$114,600
2850	CO-CURRICULAR ACTIVITIES *			\$81,250
2855	INTERSCHOLASTIC ATHLETICS *	\$71,165		\$156,335
5510	DISTRICT TRANSPORTATION *	\$83,000		\$1,635,213
5530	GARAGE BUILDING *		\$87,460	
9010	STATE RETIREMENT *	\$141,403	\$133,433	\$275,610
9020	TEACHERS' RETIREMENT *	\$95,312		\$854,688
9030	SOCIAL SECURITY *	\$141,828	\$68,138	\$765,034
9040	WORKERS' COMPENSATION *	\$8,015	\$3,850	\$43,231
9050	UNEMPLOYMENT INSURANCE *	\$5,819	\$2,795	\$31,386
9060	HOSPITAL, MEDICAL & DENTAL INS *	\$591,094	\$283,981	\$3,188,425
9089	OTHER FRINGE BENEFITS *	\$25,285	\$5,241	\$58,849
9711	DEBT PRINCIPAL		\$1,588,238	
9732	DEBT INTEREST		\$339,030	
9900	INTERFUND TRANSFERS *		\$100,000	\$55,000

Admin Budget    Capital Budget    Program Budget

Grand Totals:

\$3,775,443

\$4,380,151

\$18,644,086

\*\*\*\*Please use Chrome or Firefox browsers when entering the Business Portal to complete the PTRC. Internet Explorer is NOT recommended.\*\*\*\*

Note: Some data elements of the Property Tax Report Card have been revised or renamed to more closely follow the Property Tax Cap calculations districts complete on the Office of the State Comptroller website. Please see the Help text above for definitions. Additional guidance on the Property Tax Levy Limit is available on the Office of Educational Management Services website:  
<http://www.p12.nysed.gov/mgtserv/propertytax/taxcap/>.

Please also submit an electronic version (PDF or Word) of your school district's 2026-27 Budget Notice to: emscmgts@nysed.gov. This will enable us to help correct any formula or data entry discrepancy quickly.

Notice: The Enacted Budget allows school districts to establish a reserve fund for NYS Teachers' Retirement System Contributions, effective immediately. This reserve, if applicable, should be reported in the Schedule of Reserves under 'Other Reserve' and with a description that says: "To fund employer retirement contributions to the New York State Teachers' Retirement System (TRS.)"

Form Due - April 25, 2026

Form Preparer Name:  
Preparer's Telephone Number:

COLLEEN MILLS  
518-658-1500

<u>Shaded Fields Will Calculate</u>	Budgeted 2025-26 (A)	Proposed Budget 2026-27 (B)	Percent Change (C)
Total Budgeted Amount, not including Separate Propositions	26,266,209	26,799,680	2.03 %
A. Proposed Tax Levy to Support the Total Budgeted Amount <sup>1</sup>	10,874,224	11,109,532	
B. Tax Levy to Support Library Debt, if Applicable			
C. Tax Levy for Non-Excludable Propositions, if Applicable <sup>2</sup>			
D. Total Tax Cap Reserve Amount Used to Reduce Current Year Levy, if Applicable			
E. Total Proposed School Year Tax Levy (A+B+C-D)	10,874,224	11,109,532	2.16 %
F. Permissible Exclusions to the School Tax Levy Limit	392,673	367,238	
G. School Tax Levy Limit, <u>Excluding</u> Levy for Permissible Exclusions <sup>3</sup>	10,481,551	10,742,294	
H. Total Proposed Tax Levy for School Purposes, <u>Excluding</u> Permissible Exclusions and Levy for Library Debt, Plus Prior Year Tax Cap Reserve (E-B-F+D)	10,481,551	10,742,294	
I. Difference: (G-H); (negative value requires 60.0% voter approval) <sup>2</sup>	0	0	
Public School Enrollment			0.00 %
Consumer Price Index			2.63 %

<sup>1</sup> Include any prior year reserve for excess tax levy, including interest.

<sup>2</sup> Tax levy associated with educational or transportation services propositions are not eligible for exclusion under the School Tax Levy Limit and may affect voter approval requirements.

<sup>3</sup> For 2026-27, includes any carryover from 2025-26 and excludes any tax levy for library debt or prior year reserve for

excess tax levy, including interest.

	Actual 2025-26 (D)	Estimated 2026-27 (E)
Adjusted Restricted Fund Balance	4,454,865	4,591,619
Assigned Appropriated Fund Balance	1,000,000	1,000,000
Adjusted Unrestricted Fund Balance	1,638,102	1,500,000
Adjusted Unrestricted Fund Balance as a Percent of the Total Budget	6.24 %	5.60 %

**Schedule of Reserve Funds**

Reserve Type	Reserve Name	Reserve Description *	3/31/26 Actual Balance	6/30/26 Estimated Ending Balance	Intended Use of the Reserve in the 2026-27 School Year (Limit 200 Characters)**
--------------	--------------	-----------------------	------------------------	----------------------------------	---

Note: Be sure to click on the Save button at the bottom after each additional Reserve you add under Capital, Property Loss, Liability, or Other Reserve.

Capital	CAPITAL RESERVE 2019	For the cost of any object or purpose for which bonds may be issued.	1,045,523	1,076,889	1,045,523 - Anticipated critical infrastructure project
Repair		For the cost of repairs to capital improvements or equipment.			
Workers Compensation	WORKERS COMPENSATION RESERVE	For self-insured Workers Compensation and benefits.	621,565	643,320	55,096- Appropriate estimated thrd party Workers Comp fees for 26-27 budget
Unemployment Insurance	UNEMPLOYMENT RESERVE	For reimbursement to the State Unemployment Insurance Fund.	580,127	597,530	40,000- Appropriate estimated potential quarterly payments for 26-27 budget
Reserve for Tax Reduction		For the gradual use of the proceeds of the sale of school district real property.			
Mandatory Reserve for Debt Service	RESERVE FOR DEBT	For proceeds from the sale of district capital assets or improvement, restricted to debt service.	30,915	30,915	30,915 - Apply to anticipated critical infrastructure project to reduce tax impact
Insurance		For liability, casualty, and other types of uninsured losses.			
Property Loss + (add)		To cover property loss.			
Liability		To cover incurred liability claims.			

Tax Certiorari		For tax certiorari settlements.	<input type="text"/>	<input type="text"/>	
Reserve for Insurance Recoveries		For unexpended proceeds of insurance recoveries at fiscal year end.	<input type="text"/>	<input type="text"/>	
Employee Benefit Liability	EMPLOYEE RETIREMENT BENEFIT RESERVE	For accrued 'employee benefits' due to employees upon termination of service.	24,609	253,595	N/A- No known/announced 26-27 retirements
Retirement Contribution	ERS RESERVE	For employer retirement contributions to the State and Local Employees' Retirement System.	1,418,758	1,461,321	55,446- Appropriate estimated ERS bill to close 26-27 budget gap
Reserve for Uncollected Taxes		For unpaid taxes due certain city school districts not reimbursed by their city/county until the following fiscal year.	<input type="text"/>	<input type="text"/>	
Single Other Reserve	TRS RESERVE	For employer retirement contributions to the Teachers Retirement System (TRS)	542,683	558,964	203,603- Appropriate to pay part of the total TRS mandatory employer contributions in the 26-27 budget

\* **NYSED Reserve Guidance:**  
[http://www.p12.nysed.gov/mgt/serv/accounting/docs/reserve\\_funds.pdf](http://www.p12.nysed.gov/mgt/serv/accounting/docs/reserve_funds.pdf)

**OSC Reserve Guidance:**  
<http://osc.state.ny.us/localgov/pubs/listacctg.htm#reservefunds>

\*\*Provide a brief, but specific, statement of the planned use and appropriation for the reserve in SY 2026-27. Mention any capital expenditures that will need to be voted upon in the upcoming Budget Vote.

Save	Reset	Save & Ready
------	-------	--------------

## **BERLIN CSD - NEW YORK STATE REPORT CARD [2024 - 25]**

The New York State Report Card plays a critical role in the Board of Regents' ongoing efforts to promote educational equity and improve outcomes for all students. By offering valuable insights into school and district performance, the report card helps guide instructional improvements and enhances services for students. It provides essential public information on staff, students, and key performance metrics, in accordance with the Every Student Succeeds Act (ESSA). At its core, New York State's ESSA plan is designed to create interconnected strategies that support districts and schools, ensuring every student has the opportunity to succeed. New York State is committed to fostering a culture of continuous improvement, where data from the report card is integrated with local data elements to support decisions and actions to address challenges and celebrate progress. This commitment ensures that all students—regardless of their background, location, or circumstances—are given the tools and resources to thrive.

### **2025-26 ACCOUNTABILITY STATUS AND SUPPORT MODEL BASED ON 2024-25 DATA**

---

For information about how 2025-26 accountability statuses and support models were determined, see Understanding the New York State Accountability System under the Every Student Succeeds Act (ESSA) for 2025-26 Accountability Statuses Based on 2024-25 Results.

## **LOCAL SUPPORT AND IMPROVEMENT**

# MEASURES OF INTERIM PROGRESS AND LONG-TERM GOALS

## ELEMENTARY/MIDDLE WEIGHTED MEASURES OF INTERIM PROGRESS (MIPS) & LONG-TERM GOALS (LTGS)

---

## SECONDARY WEIGHTED MEASURES OF INTERIM PROGRESS (MIPS) & LONG-TERM GOALS (LTGS)

---

**SECONDARY GRADUATION RATE MEASURES OF INTERIM PROGRESS (MIPS) & LONG-TERM GOALS (LTGS)**

**ELL PROGRESS TARGET & LONG-TERM GOAL (LTG)**

Subgroup	Number of ELLs	Benchmark	Progress Rate	Success Ratio	State Target	State LTG
English Language Learner	2	—	—	—	—	—

**SECTION 1003 SCHOOL IMPROVEMENT FUNDS (2024-25)**

The link below provides a list of all Local Education Agencies and public schools that received Section 1003 school improvement funds, including the amount of funds each school received and the types of strategies implemented in each school with such funds.

Section 1003 School Improvement Funds Data (1.13 megabytes)

For information on the use of Title I School Improvement funds, see:

- 2024-25 Title I School Improvement Grant 1003 (Basic)
- 2024-25 Title I School Improvement Grant 1003 (Coaching for Excellence)
- 2024-25 Title I School Improvement Grant 1003 (Targeted Support)
- 2024-25 Title I School Improvement Grant 1003 (Resource Allocation Review)
- 2025 Title I School Improvement Grant 1003 (Planning)
- 2025 Title I School Improvement Grant 1003 (Supplemental Support)
- 2020-24 NYSIP-PLC Phase III

### ELEMENTARY/MIDDLE CORE SUBJECT PERFORMANCE

See the Office of Accountability School and District Resources and Data website for cut points.

Subgroup	Subject	Cohort	Index
All Students	ELA	230	129.8
	Math	226	137.2
	Science	88	162.5
	Combined	544	138.1
Asian or Native Hawaiian/Other Pacific Islander	ELA	1	—
	Math	1	—
	Science	0	—
	Combined	2	—
Black or African American	ELA	2	—
	Math	2	—
	Science	1	—
	Combined	5	—
Hispanic or Latino	ELA	3	—
	Math	3	—
	Science	2	—
	Combined	8	—
Multiracial	ELA	7	128.6
	Math	7	100
	Science	2	—
	Combined	16	—
White	ELA	217	129.3
	Math	213	138
	Science	83	165.7
	Combined	513	138.8

Subgroup	Subject	Cohort	Index
English Language Learner	ELA	1	—
	Math	1	—
	Science	0	—
	Combined	2	—
Students with Disabilities	ELA	45	73.3
	Math	46	62
	Science	13	130.8
	Combined	104	75.5
Economically Disadvantaged	ELA	106	107.1
	Math	103	111.7
	Science	37	154.1
	Combined	246	116.1

**ELEMENTARY/MIDDLE WEIGHTED AVERAGE PERFORMANCE**

Subgroup	Subject	Cohort	Index
All Students	ELA	248	120.4
	Math	248	125
	Science	89	160.7
	Combined	585	128.5
Asian or Native Hawaiian/Other Pacific Islander	ELA	1	—
	Math	1	—
	Science	0	—
	Combined	2	—
Black or African American	ELA	2	—
	Math	2	—
	Science	1	—
	Combined	5	—
Hispanic or Latino	ELA	3	—
	Math	3	—
	Science	2	—
	Combined	8	—

Subgroup	Subject	Cohort	Index
Multiracial	ELA	10	90
	Math	10	70
	Science	3	—
	Combined	23	73.9
White	ELA	233	120.4
	Math	233	126.2
	Science	84	163.7
	Combined	550	129.5
English Language Learner	ELA	1	—
	Math	1	—
	Science	0	—
	Combined	2	—
Students with Disabilities	ELA	56	58.9
	Math	56	50.9
	Science	15	113.3
	Combined	127	61.8
Economically Disadvantaged	ELA	120	94.6
	Math	120	95.8
	Science	38	150
	Combined	278	102.7

**ELEMENTARY/MIDDLE GROWTH**

Subgroup	Number of SGPs	Sum of SGPs	Index
All Students	360	15,378	42.7
Black or African American	4	—	—
Hispanic or Latino	4	—	—
Multiracial	10	—	—
White	342	14,593	42.7
Students with Disabilities	74	3,232	43.7
Economically Disadvantaged	166	7,077	42.6

**ELEMENTARY/MIDDLE ENGLISH LANGUAGE PROFICIENCY**

Subgroup	Number of ELLs	Benchmark	Progress Rate	Success Ratio
All Students	2	—	—	—
Asian or Native Hawaiian/Other Pacific Islander	1	—	—	—
Hispanic or Latino	1	—	—	—
English Language Learner	2	—	—	—

**ELEMENTARY/MIDDLE ATTENDANCE**

See the Office of Accountability School and District Resources and Data website for cut points.

Subgroup	Students Enrolled	Level 1 (85% Or Less)	Level 2 (85.1%-90.0%)	Level 3 (90.1-95.0%)	Level 4 (95.1-100.0%)	Attendance Index
All Students	362	45	52	120	145	180.8
Asian or Native Hawaiian/Other Pacific Islander	1	—	—	—	—	—
Black or African American	1	—	—	—	—	—
Hispanic or Latino	5	—	—	—	—	—
Multiracial	18	—	—	—	—	—
White	337	39	49	113	136	182.5
English Language Learner	2	—	—	—	—	—
Students with Disabilities	92	14	10	26	42	181.5
Economically Disadvantaged	186	27	32	66	61	170.2

**ELEMENTARY/MIDDLE ELA PARTICIPATION RATE**

Subgroup	Tested 95% In Current Year	Current Year Enrollment	Current Year Participation Rate
All Students	X	270	88.5%
Asian or Native Hawaiian/Other Pacific Islander	—	1	—
Black or African American	—	2	—
Hispanic or Latino	—	3	—
Multiracial	—	10	—
White	X	254	89%
English Language Learner	—	1	—
Students with Disabilities	X	60	76.7%
Economically Disadvantaged	X	132	84.9%

### ELEMENTARY/MIDDLE MATHEMATICS PARTICIPATION RATE

Subgroup	Tested 95% In Current Year	Current Year Enrollment	Current Year Participation Rate
All Students	X	270	87%
Asian or Native Hawaiian/Other Pacific Islander	—	1	—
Black or African American	—	2	—
Hispanic or Latino	—	3	—
Multiracial	—	10	—
White	X	254	87.4%
English Language Learner	—	1	—
Students with Disabilities	X	60	78.3%
Economically Disadvantaged	X	132	82.6%

### SECONDARY CORE SUBJECT PERFORMANCE

See the Office of Accountability School and District Resources and Data website for cut points.

Subgroup	Subject	Cohort	Index	Combined Index
All Students	ELA	41	163.4	143
	Math	41	106.1	
	Science	41	176.8	
	Social Studies	40	133.8	
White	ELA	41	163.4	143
	Math	41	106.1	
	Science	41	176.8	
	Social Studies	40	133.8	
Students with Disabilities	ELA	7	57.1	87.6
	Math	7	100	
	Science	7	135.7	
	Social Studies	6	66.7	
Economically Disadvantaged	ELA	16	150	140
	Math	16	106.3	
	Science	16	175	
	Social Studies	16	140.6	

**SECONDARY WEIGHTED AVERAGE PERFORMANCE**

Subgroup	Subject	Cohort	Index	Combined Index
All Students	ELA	41	163.4	142.3
	Math	41	106.1	
	Science	41	176.8	
	Social Studies	41	130.5	
White	ELA	41	163.4	142.3
	Math	41	106.1	
	Science	41	176.8	
	Social Studies	41	130.5	
Students with Disabilities	ELA	7	57.1	85.7
	Math	7	100	
	Science	7	135.7	
	Social Studies	7	57.1	
Economically Disadvantaged	ELA	16	150	140
	Math	16	106.3	
	Science	16	175	
	Social Studies	16	140.6	

**SECONDARY GRADUATION RATE**

Subgroup	Cohort	Number In Cohort	Number Graduated	Grad Rate	Average Grad Rate
All Students	4-year	65	57	87.7%	86.2%
	5-year	54	50	92.6%	
	6-year	51	40	78.4%	
Black or African American	4-year	0	—	—	—
	5-year	1	—	—	
	6-year	1	—	—	
Hispanic or Latino	4-year	1	—	—	—
	5-year	0	—	—	
	6-year	1	—	—	
Multiracial	4-year	2	—	—	—
	5-year	1	—	—	
	6-year	0	—	—	
White	4-year	62	54	87.1%	86.3%
	5-year	52	49	94.2%	
	6-year	49	38	77.6%	
Students with Disabilities	4-year	12	—	—	—
	5-year	10	—	—	
	6-year	13	—	—	
Economically Disadvantaged	4-year	29	23	79.3%	77.9%
	5-year	27	24	88.9%	
	6-year	29	19	65.5%	

### SECONDARY ATTENDANCE

See the Office of Accountability School and District Resources and Data website for cut points.

Subgroup	Students Enrolled	Level 1 (85% Or Less)	Level 2 (85.1%-90.0%)	Level 3 (90.1-95.0%)	Level 4 (95.1-100.0%)	Attendance Index
All Students	189	31	37	57	64	164.6
Black or African American	1	—	—	—	—	—
Hispanic or Latino	2	—	—	—	—	—
Multiracial	6	—	—	—	—	—
White	180	29	36	55	60	164.4
Students with Disabilities	39	12	7	8	12	135.9
Economically Disadvantaged	91	21	17	29	24	148.4

### SECONDARY COLLEGE, CAREER, AND CIVIC READINESS

Subgroup	Cohort Count	Annual Biliteracy	2.0 Weight	1.5 Weight	1.0 Weight	0.5 Weight	0.0 Weight	Index
All Students	44	0	30	0	8	0	6	154.5
White	44	0	30	0	8	0	6	154.5
Students with Disabilities	8	0	—	—	—	—	—	—
Economically Disadvantaged	19	0	—	—	—	—	—	—

### SECONDARY ELA PARTICIPATION RATE

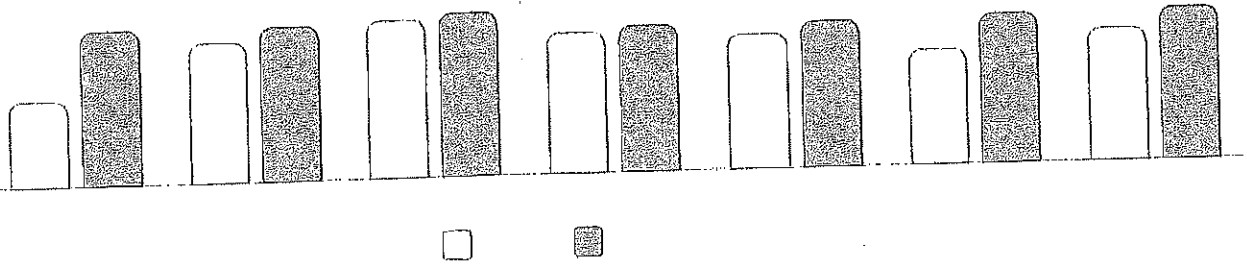
Subgroup	Tested 95% In Current Year	Current Year 12th Grade Enrollment	Current Year Participation Rate
All Students	✓	44	100%
White	✓	44	100%
Students with Disabilities	—	7	—
Economically Disadvantaged	—	18	—

### SECONDARY MATHEMATICS PARTICIPATION RATE

Subgroup	Tested 95% In Current Year	Current Year 12th Grade Enrollment	Current Year Participation Rate
All Students	✓	44	97.7%
White	✓	44	97.7%
Students with Disabilities	—	7	—
Economically Disadvantaged	—	18	—

## GRADES 3-8 ENGLISH LANGUAGE ARTS RESULTS (2024-25)

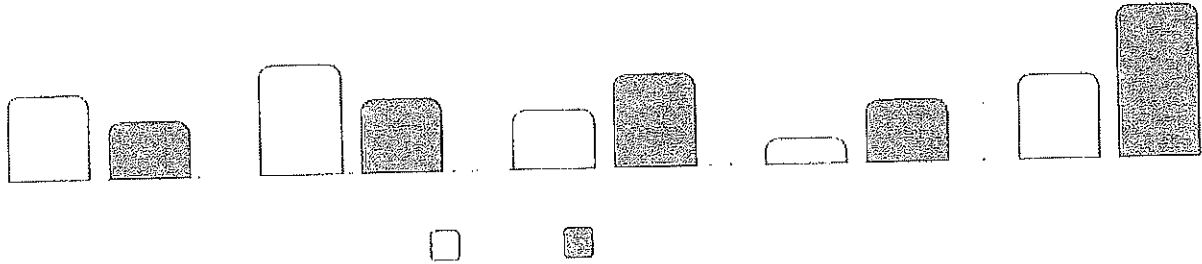
### SUMMARY RESULTS



Grade	Total #	Not Tested		Tested		Level 1		Level 2		Level 3		Level 4		Proficient (Levels 3 & 4)	
		#	%	#	%	#	%	#	%	#	%	#	%	#	%
Grade 3	35	2	6%	33	94%	10	30%	13	39%	7	21%	3	9%	10	30%
Grade 4	45	6	13%	39	87%	6	15%	14	36%	8	21%	11	28%	19	49%
Grade 5	53	2	4%	51	96%	12	24%	11	22%	23	45%	5	10%	28	55%
Grade 6	48	7	15%	41	85%	10	24%	11	27%	15	37%	5	12%	20	49%
Grade 7	43	11	26%	32	74%	12	38%	5	16%	9	28%	6	19%	15	47%
Grade 8	47	7	15%	40	85%	8	20%	16	40%	11	28%	5	13%	16	40%
Grades 3-8	271	35	13%	236	87%	58	25%	70	30%	73	31%	35	15%	108	46%

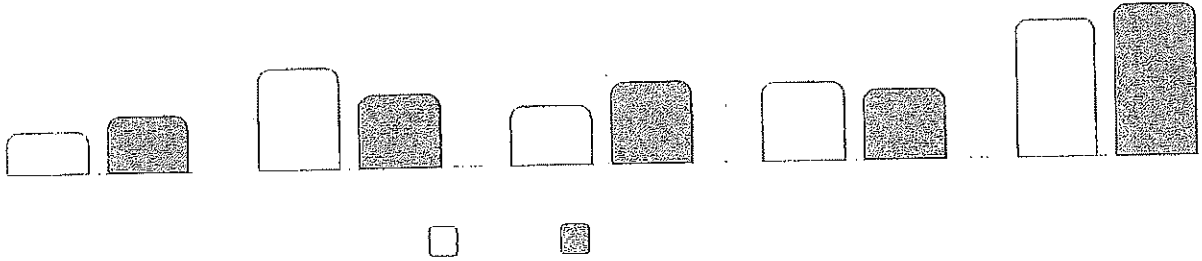
See report card Glossary and Guide for criteria used to include students in this table, as well as business rules for suppressions (displayed as "—" dash).

### GRADE 3 ELA RESULTS



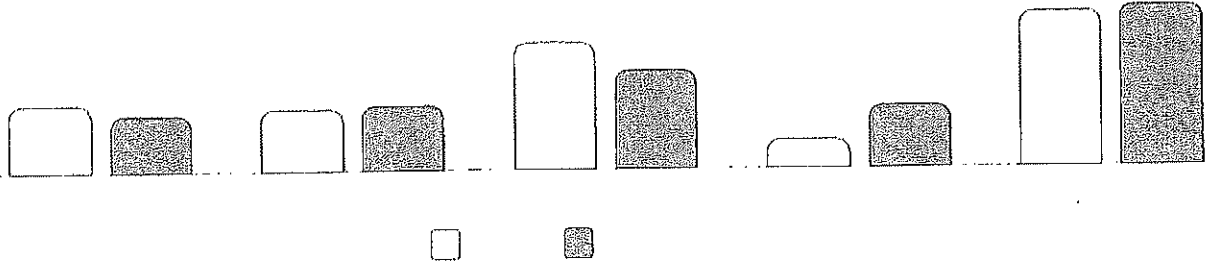
Subgroup	Total	Not Tested		Tested		Level 1		Level 2		Level 3		Level 4		Proficient (Levels 3 & 4)	
	#	#	%	#	%	#	%	#	%	#	%	#	%	#	%
All Students	35	2	6%	33	94%	10	30%	13	39%	7	21%	3	9%	10	30%
Female	18	2	11%	16	89%	5	31%	7	44%	4	25%	0	0%	4	25%
Male	17	0	0%	17	100%	5	29%	6	35%	3	18%	3	18%	6	35%
General Education Students	28	0	0%	28	100%	6	21%	13	46%	7	25%	2	7%	9	32%
Students with Disabilities	7	2	29%	5	71%	4	80%	0	0%	0	0%	1	20%	1	20%
Asian or Native Hawaiian/Other Pacific Islander	1	0	0%	1	100%	—	—	—	—	—	—	—	—	—	—
Hispanic or Latino	1	0	0%	1	100%	—	—	—	—	—	—	—	—	—	—
White	31	2	6%	29	94%	—	—	—	—	—	—	—	—	—	—
Multiracial	2	0	0%	2	100%	—	—	—	—	—	—	—	—	—	—
Small Group Total: Race & Ethnicity	35	2	6%	33	94%	10	30%	13	39%	7	21%	3	9%	10	30%
Economically Disadvantaged	19	2	11%	17	89%	7	41%	7	41%	2	12%	1	6%	3	18%
Not Economically Disadvantaged	16	0	0%	16	100%	3	19%	6	38%	5	31%	2	13%	7	44%
English Language Learner	1	0	0%	1	100%	—	—	—	—	—	—	—	—	—	—
Non-English Language Learner	34	2	6%	32	94%	—	—	—	—	—	—	—	—	—	—
Not in Foster Care	35	2	6%	33	94%	10	30%	13	39%	7	21%	3	9%	10	30%
Not Homeless	35	2	6%	33	94%	10	30%	13	39%	7	21%	3	9%	10	30%
Not Migrant	35	2	6%	33	94%	10	30%	13	39%	7	21%	3	9%	10	30%
Parent Not In Armed Forces	35	2	6%	33	94%	10	30%	13	39%	7	21%	3	9%	10	30%

### GRADE 4 ELA RESULTS



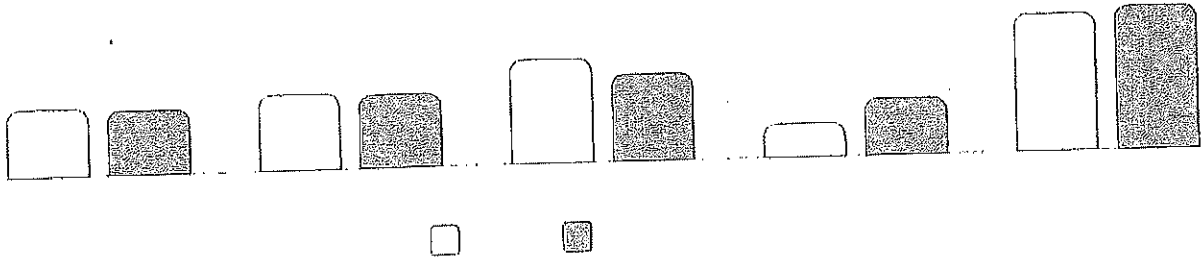
Subgroup	Total		Not Tested		Tested		Level 1		Level 2		Level 3		Level 4		Proficient (Levels 3 & 4)	
	#	%	#	%	#	%	#	%	#	%	#	%	#	%	#	%
All Students	45		6	13%	39	87%	6	15%	14	36%	8	21%	11	28%	19	49%
Female	16		1	6%	15	94%	1	7%	5	33%	4	27%	5	33%	9	60%
Male	29		5	17%	24	83%	5	21%	9	38%	4	17%	6	25%	10	42%
General Education Students	33		5	15%	28	85%	3	11%	9	32%	7	25%	9	32%	16	57%
Students with Disabilities	12		1	8%	11	92%	3	27%	5	45%	1	9%	2	18%	3	27%
Black or African American	1		0	0%	1	100%	—	—	—	—	—	—	—	—	—	—
White	43		6	14%	37	86%	—	—	—	—	—	—	—	—	—	—
Multiracial	1		0	0%	1	100%	—	—	—	—	—	—	—	—	—	—
Small Group Total: Race & Ethnicity	45		6	13%	39	87%	6	15%	14	36%	8	21%	11	28%	19	49%
Economically Disadvantaged	23		3	13%	20	87%	4	20%	9	45%	3	15%	4	20%	7	35%
Not Economically Disadvantaged	22		3	14%	19	86%	2	11%	5	26%	5	26%	7	37%	12	63%
Non-English Language Learner	45		6	13%	39	87%	6	15%	14	36%	8	21%	11	28%	19	49%
Not in Foster Care	45		6	13%	39	87%	6	15%	14	36%	8	21%	11	28%	19	49%
Not Homeless	45		6	13%	39	87%	6	15%	14	36%	8	21%	11	28%	19	49%
Not Migrant	45		6	13%	39	87%	6	15%	14	36%	8	21%	11	28%	19	49%
Parent Not in Armed Forces	45		6	13%	39	87%	6	15%	14	36%	8	21%	11	28%	19	49%

### GRADE 5 ELA RESULTS



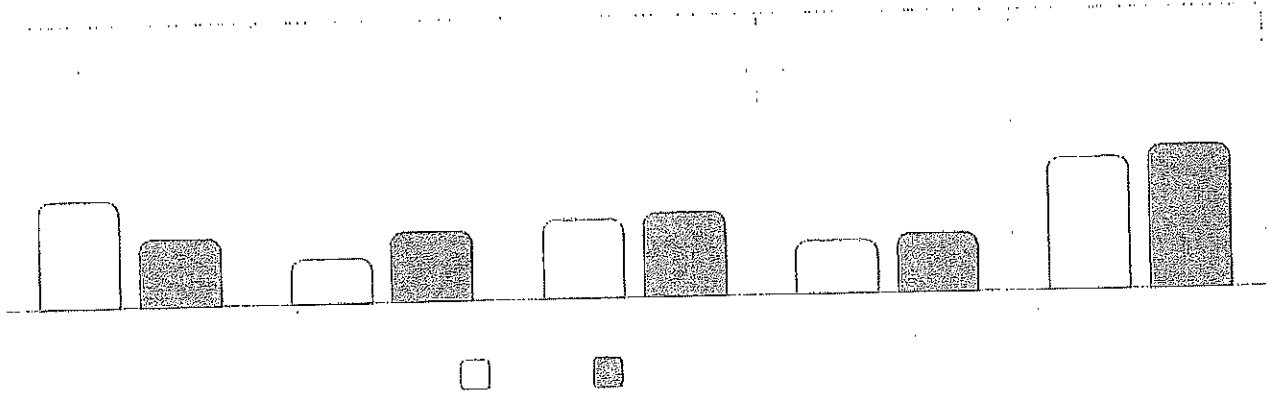
Subgroup	Total	Not-Tested		Tested		Level 1		Level 2		Level 3		Level 4		Proficient (Levels 3 & 4)	
	#	#	%	#	%	#	%	#	%	#	%	#	%	#	%
All Students	53	2	4%	51	96%	12	24%	11	22%	23	45%	5	10%	28	55%
Female	31	2	6%	29	94%	4	14%	7	24%	14	48%	4	14%	18	62%
Male	22	0	0%	22	100%	8	36%	4	18%	9	41%	1	5%	10	45%
General Education Students	45	0	0%	45	100%	8	18%	9	20%	23	51%	5	11%	28	62%
Students with Disabilities	8	2	25%	6	75%	4	67%	2	33%	0	0%	0	0%	0	0%
Black or African American	1	0	0%	1	100%	—	—	—	—	—	—	—	—	—	—
Hispanic or Latino	2	0	0%	2	100%	—	—	—	—	—	—	—	—	—	—
White	49	2	4%	47	96%	—	—	—	—	—	—	—	—	—	—
Multiracial	1	0	0%	1	100%	—	—	—	—	—	—	—	—	—	—
Small Group Total: Race & Ethnicity	53	2	4%	51	96%	12	24%	11	22%	23	45%	5	10%	28	55%
Economically Disadvantaged	23	1	4%	22	96%	7	32%	4	18%	11	50%	0	0%	11	50%
Not Economically Disadvantaged	30	1	3%	29	97%	5	17%	7	24%	12	41%	5	17%	17	59%
Non-English Language Learner	53	2	4%	51	96%	12	24%	11	22%	23	45%	5	10%	28	55%
Not in Foster Care	53	2	4%	51	96%	12	24%	11	22%	23	45%	5	10%	28	55%
Homeless	1	0	0%	1	100%	—	—	—	—	—	—	—	—	—	—
Not Homeless	52	2	4%	50	96%	—	—	—	—	—	—	—	—	—	—
Not Migrant	53	2	4%	51	96%	12	24%	11	22%	23	45%	5	10%	28	55%
Parent Not in Armed Forces	53	2	4%	51	96%	12	24%	11	22%	23	45%	5	10%	28	55%

### GRADE 6 ELA RESULTS



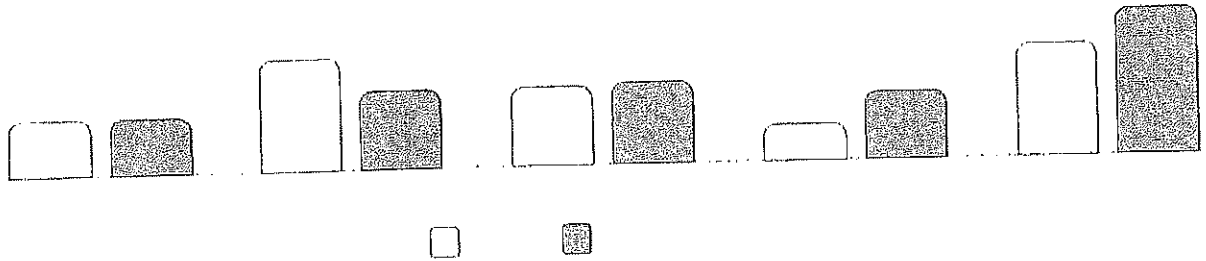
Subgroup	Total	Not Tested		Tested		Level 1		Level 2		Level 3		Level 4		Proficient (Levels 3 & 4)	
	#	#	%	#	%	#	%	#	%	#	%	#	%	#	%
All Students	48	7	15%	41	85%	10	24%	11	27%	15	37%	5	12%	20	49%
Female	25	6	24%	19	76%	5	26%	5	26%	5	26%	4	21%	9	47%
Male	23	1	4%	22	96%	5	23%	6	27%	10	45%	1	5%	11	50%
General Education Students	37	3	8%	34	92%	6	18%	11	32%	12	35%	5	15%	17	50%
Students with Disabilities	11	4	36%	7	64%	4	57%	0	0%	3	43%	0	0%	3	43%
White	46	6	13%	40	87%	—	—	—	—	—	—	—	—	—	—
Multiracial	2	1	50%	1	50%	—	—	—	—	—	—	—	—	—	—
Small Group Total: Race & Ethnicity	48	7	15%	41	85%	10	24%	11	27%	15	37%	5	12%	20	49%
Economically Disadvantaged	25	5	20%	20	80%	5	25%	8	40%	5	25%	2	10%	7	35%
Not Economically Disadvantaged	23	2	9%	21	91%	5	24%	3	14%	10	48%	3	14%	13	62%
Non-English Language Learner	48	7	15%	41	85%	10	24%	11	27%	15	37%	5	12%	20	49%
Not In Foster Care	48	7	15%	41	85%	10	24%	11	27%	15	37%	5	12%	20	49%
Not Homeless	48	7	15%	41	85%	10	24%	11	27%	15	37%	5	12%	20	49%
Not Migrant	48	7	15%	41	85%	10	24%	11	27%	15	37%	5	12%	20	49%
Parent Not in Armed Forces	48	7	15%	41	85%	10	24%	11	27%	15	37%	5	12%	20	49%

### GRADE 7 ELA RESULTS



Subgroup	Total	Not Tested		Tested		Level 1		Level 2		Level 3		Level 4		Proficient (Levels 3 & 4)	
	#	#	%	#	%	#	%	#	%	#	%	#	%	#	%
All Students	43	11	26%	32	74%	12	38%	5	16%	9	28%	6	19%	15	47%
Female	19	7	37%	12	63%	5	42%	2	17%	3	25%	2	17%	5	42%
Male	24	4	17%	20	83%	7	35%	3	15%	6	30%	4	20%	10	50%
General Education Students	29	5	17%	24	83%	7	29%	4	17%	8	33%	5	21%	13	54%
Students with Disabilities	14	6	43%	8	57%	5	63%	1	13%	1	13%	1	13%	2	25%
White	41	10	24%	31	76%	—	—	—	—	—	—	—	—	—	—
Multiracial	2	1	50%	1	50%	—	—	—	—	—	—	—	—	—	—
Small Group Total: Race & Ethnicity	43	11	26%	32	74%	12	38%	5	16%	9	28%	6	19%	15	47%
Economically Disadvantaged	22	6	27%	16	73%	7	44%	3	19%	3	19%	3	19%	6	38%
Not Economically Disadvantaged	21	5	24%	16	76%	5	31%	2	13%	6	38%	3	19%	9	56%
Non-English Language Learner	43	11	26%	32	74%	12	38%	5	16%	9	28%	6	19%	15	47%
Not in Foster Care	43	11	26%	32	74%	12	38%	5	16%	9	28%	6	19%	15	47%
Not Homeless	43	11	26%	32	74%	12	38%	5	16%	9	28%	6	19%	15	47%
Not Migrant	43	11	26%	32	74%	12	38%	5	16%	9	28%	6	19%	15	47%
Parent Not in Armed Forces	43	11	26%	32	74%	12	38%	5	16%	9	28%	6	19%	15	47%

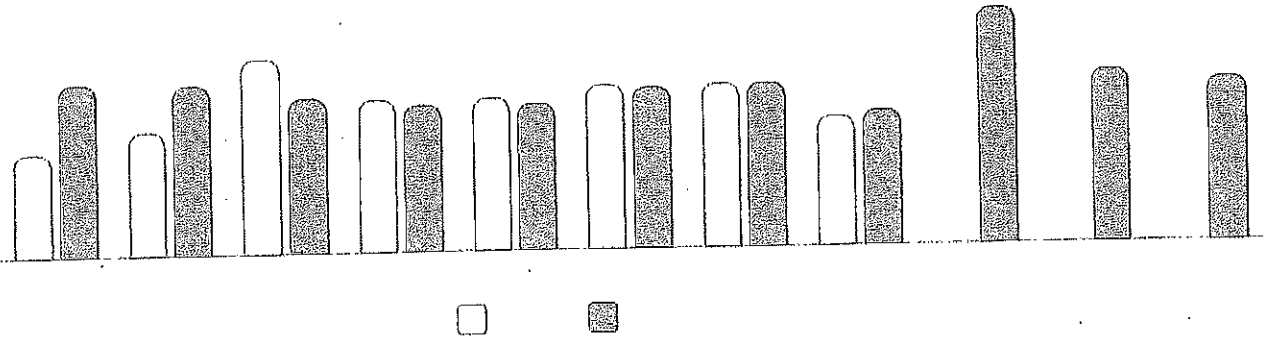
### GRADE 8 ELA RESULTS



Subgroup	Total	Not Tested		Tested		Level 1		Level 2		Level 3		Level 4		Proficient (Levels 3 & 4)	
	#	#	%	#	%	#	%	#	%	#	%	#	%	#	%
All Students	47	7	15%	40	85%	8	20%	16	40%	11	28%	5	13%	16	40%
Female	21	3	14%	18	86%	3	17%	5	28%	7	39%	3	17%	10	56%
Male	26	4	15%	22	85%	5	23%	11	50%	4	18%	2	9%	6	27%
General Education Students	38	4	11%	34	89%	3	9%	15	44%	11	32%	5	15%	16	47%
Students with Disabilities	9	3	33%	6	67%	5	83%	1	17%	0	0%	0	0%	0	0%
White	45	6	13%	39	87%	—	—	—	—	—	—	—	—	—	—
Multiracial	2	1	50%	1	50%	—	—	—	—	—	—	—	—	—	—
Small Group Total: Race & Ethnicity	47	7	15%	40	85%	8	20%	16	40%	11	28%	5	13%	16	40%
Economically Disadvantaged	20	4	20%	16	80%	5	31%	8	50%	2	13%	1	6%	3	19%
Not Economically Disadvantaged	27	3	11%	24	89%	3	13%	8	33%	9	38%	4	17%	13	54%
Non-English Language Learner	47	7	15%	40	85%	8	20%	16	40%	11	28%	5	13%	16	40%
Not in Foster Care	47	7	15%	40	85%	8	20%	16	40%	11	28%	5	13%	16	40%
Homeless	2	1	50%	1	50%	—	—	—	—	—	—	—	—	—	—
Not Homeless	45	6	13%	39	87%	—	—	—	—	—	—	—	—	—	—
Not Migrant	47	7	15%	40	85%	8	20%	16	40%	11	28%	5	13%	16	40%
Parent Not in Armed Forces	47	7	15%	40	85%	8	20%	16	40%	11	28%	5	13%	16	40%

## GRADES 3-8 MATHEMATICS RESULTS (2024-25)

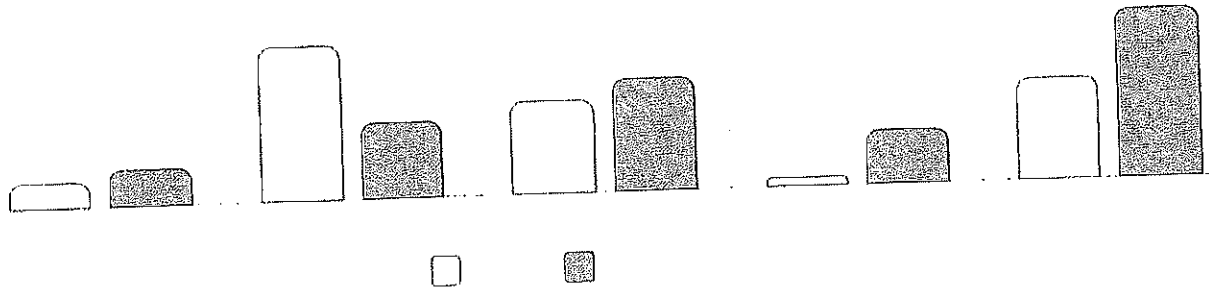
### SUMMARY RESULTS



Grade	Total	Not Tested		Tested		Level 1		Level 2		Level 3		Level 4 & Above		Proficient (Levels 3 & Above)	
	#	#	%	#	%	#	%	#	%	#	%	#	%	#	%
Grade 3	35	2	6%	33	94%	3	9%	18	55%	11	33%	1	3%	12	36%
Grade 4	45	3	7%	42	93%	9	21%	15	36%	13	31%	5	12%	18	43%
Grade 5	53	3	6%	50	94%	9	18%	7	14%	20	40%	14	28%	34	68%
Grade 6	48	10	21%	38	79%	10	26%	8	21%	17	45%	3	8%	20	53%
Combined 6	48	10	21%	38	79%	10	26%	8	21%	17	45%	3	8%	20	53%
Grade 7	43	15	35%	28	65%	6	21%	6	21%	10	36%	6	21%	16	57%
Combined 7	43	15	35%	28	65%	6	21%	6	21%	10	36%	6	21%	16	57%
Grade 8	47	7	15%	40	85%	15	38%	7	18%	15	38%	3	8%	18	45%
Regents 8	—	—	—	1	2%	—	—	—	—	—	—	—	—	—	—
Combined 8	47	6	13%	41	87%	—	—	—	—	—	—	—	—	—	—
Grades 3-8	271	39	14%	232	86%	—	—	—	—	—	—	—	—	—	—

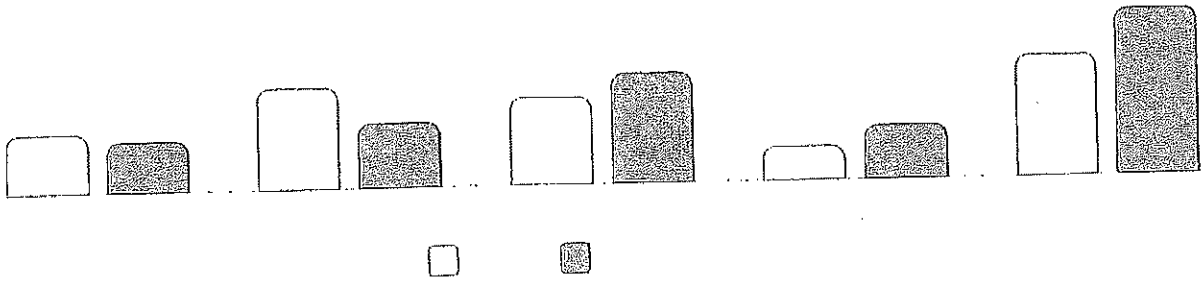
See report card Glossary and Guide for criteria used to include students in this table, as well as business rules for suppressions (displayed as "—" dash).

### GRADE 3 MATH RESULTS



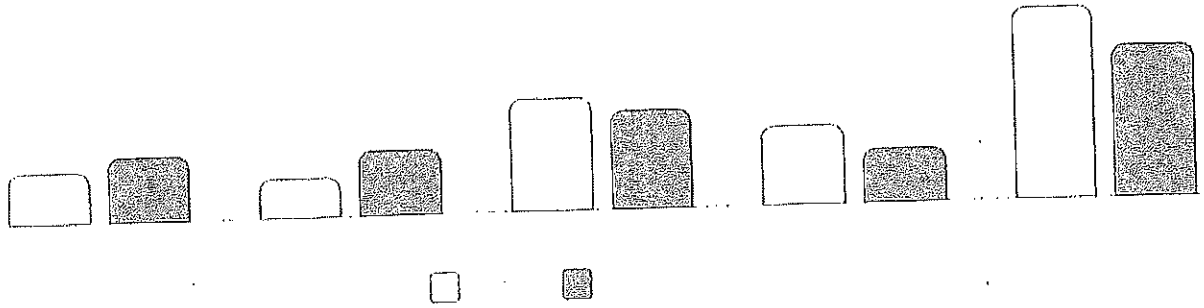
Subgroup	Total	Not Tested		Tested		Level 1		Level 2		Level 3		Level 4		Proficient (Levels 3 & 4)	
	#	#	%	#	%	#	%	#	%	#	%	#	%	#	%
All Students	35	2	6%	33	94%	3	9%	18	55%	11	33%	1	3%	12	36%
Female	18	2	11%	16	89%	1	6%	11	69%	4	25%	0	0%	4	25%
Male	17	0	0%	17	100%	2	12%	7	41%	7	41%	1	6%	8	47%
General Education Students	28	0	0%	28	100%	1	4%	16	57%	10	36%	1	4%	11	39%
Students with Disabilities	7	2	29%	5	71%	2	40%	2	40%	1	20%	0	0%	1	20%
Asian or Native Hawaiian/Other Pacific Islander	1	0	0%	1	100%	—	—	—	—	—	—	—	—	—	—
Hispanic or Latino	1	0	0%	1	100%	—	—	—	—	—	—	—	—	—	—
White	31	2	6%	29	94%	—	—	—	—	—	—	—	—	—	—
Multiracial	2	0	0%	2	100%	—	—	—	—	—	—	—	—	—	—
Small Group Total: Race & Ethnicity	35	2	6%	33	94%	3	9%	18	55%	11	33%	1	3%	12	36%
Economically Disadvantaged	19	2	11%	17	89%	2	12%	12	71%	3	18%	0	0%	3	18%
Not Economically Disadvantaged	16	0	0%	16	100%	1	6%	6	38%	8	50%	1	6%	9	56%
English Language Learner	1	0	0%	1	100%	—	—	—	—	—	—	—	—	—	—
Non-English Language Learner	34	2	6%	32	94%	—	—	—	—	—	—	—	—	—	—
Not in Foster Care	35	2	6%	33	94%	3	9%	18	55%	11	33%	1	3%	12	36%
Not Homeless	35	2	6%	33	94%	3	9%	18	55%	11	33%	1	3%	12	36%
Not Migrant	35	2	6%	33	94%	3	9%	18	55%	11	33%	1	3%	12	36%
Parent Not in Armed Forces	35	2	6%	33	94%	3	9%	18	55%	11	33%	1	3%	12	36%

### GRADE 4 MATH RESULTS



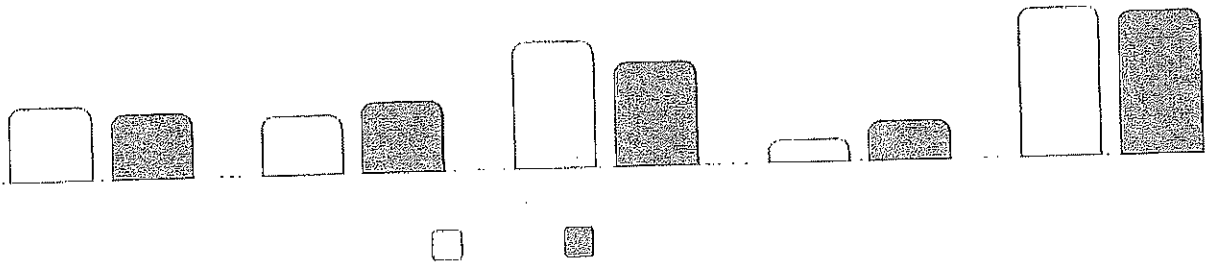
Subgroup	Total	Not Tested		Tested		Level 1		Level 2		Level 3		Level 4		Proficient (Levels 3 & 4)	
	#	#	%	#	%	#	%	#	%	#	%	#	%	#	%
All Students	45	3	7%	42	93%	9	21%	15	36%	13	31%	5	12%	18	43%
Female	16	0	0%	16	100%	1	6%	9	56%	5	31%	1	6%	6	38%
Male	29	3	10%	26	90%	8	31%	6	23%	8	31%	4	15%	12	46%
General Education Students	33	3	9%	30	91%	3	10%	9	30%	13	43%	5	17%	18	60%
Students with Disabilities	12	0	0%	12	100%	6	50%	6	50%	0	0%	0	0%	0	0%
Black or African American	1	0	0%	1	100%	—	—	—	—	—	—	—	—	—	—
White	43	3	7%	40	93%	—	—	—	—	—	—	—	—	—	—
Multiracial	1	0	0%	1	100%	—	—	—	—	—	—	—	—	—	—
Small Group Total: Race & Ethnicity	45	3	7%	42	93%	9	21%	15	36%	13	31%	5	12%	18	43%
Economically Disadvantaged	23	1	4%	22	96%	8	36%	8	36%	5	23%	1	5%	6	27%
Not Economically Disadvantaged	22	2	9%	20	91%	1	5%	7	35%	8	40%	4	20%	12	60%
Non-English Language Learner	45	3	7%	42	93%	9	21%	15	36%	13	31%	5	12%	18	43%
Not in Foster Care	45	3	7%	42	93%	9	21%	15	36%	13	31%	5	12%	18	43%
Not Homeless	45	3	7%	42	93%	9	21%	15	36%	13	31%	5	12%	18	43%
Not Migrant	45	3	7%	42	93%	9	21%	15	36%	13	31%	5	12%	18	43%
Parent Not in Armed Forces	45	3	7%	42	93%	9	21%	15	36%	13	31%	5	12%	18	43%

### GRADE 5 MATH RESULTS



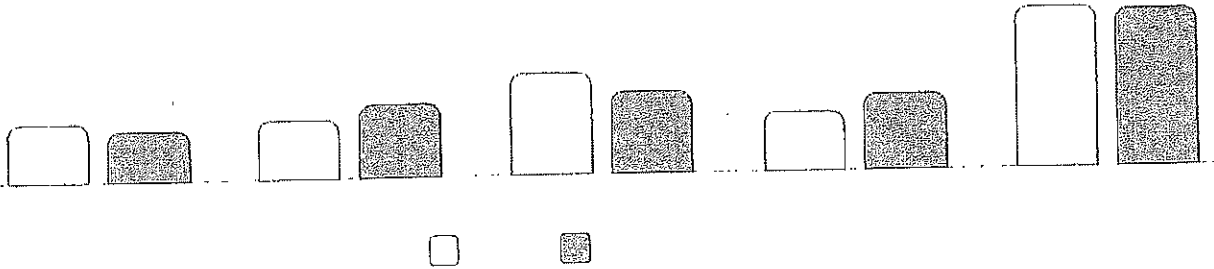
Subgroup	Total		Not Tested		Tested		Level 1		Level 2		Level 3		Level 4		Proficient (Levels 3 & 4)	
	#	%	#	%	#	%	#	%	#	%	#	%	#	%	#	%
All Students	53		3	6%	50	94%	9	18%	7	14%	20	40%	14	28%	34	68%
Female	31		3	10%	28	90%	2	7%	3	11%	15	54%	8	29%	23	82%
Male	22		0	0%	22	100%	7	32%	4	18%	5	23%	6	27%	11	50%
General Education Students	45		1	2%	44	98%	3	7%	7	16%	20	45%	14	32%	34	77%
Students with Disabilities	8		2	25%	6	75%	6	100%	0	0%	0	0%	0	0%	0	0%
Black or African American	1		0	0%	1	100%	—	—	—	—	—	—	—	—	—	—
Hispanic or Latino	2		0	0%	2	100%	—	—	—	—	—	—	—	—	—	—
White	49		3	6%	46	94%	—	—	—	—	—	—	—	—	—	—
Multiracial	1		0	0%	1	100%	—	—	—	—	—	—	—	—	—	—
Small Group Total: Race & Ethnicity	53		3	6%	50	94%	9	18%	7	14%	20	40%	14	28%	34	68%
Economically Disadvantaged	23		2	9%	21	91%	3	14%	4	19%	10	48%	4	19%	14	67%
Not Economically Disadvantaged	30		1	3%	29	97%	6	21%	3	10%	10	34%	10	34%	20	69%
Non-English Language Learner	53		3	6%	50	94%	9	18%	7	14%	20	40%	14	28%	34	68%
Not in Foster Care	53		3	6%	50	94%	9	18%	7	14%	20	40%	14	28%	34	68%
Homeless	1		0	0%	1	100%	—	—	—	—	—	—	—	—	—	—
Not Homeless	52		3	6%	49	94%	—	—	—	—	—	—	—	—	—	—
Not Migrant	53		3	6%	50	94%	9	18%	7	14%	20	40%	14	28%	34	68%
Parent Not in Armed Forces	53		3	6%	50	94%	9	18%	7	14%	20	40%	14	28%	34	68%

### GRADE 6 MATH RESULTS



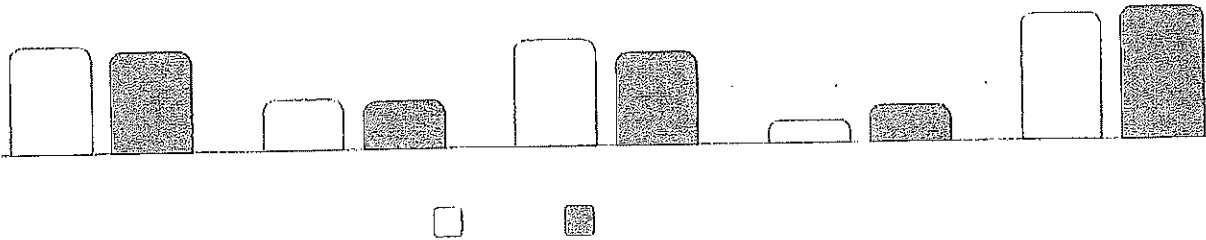
Subgroup	Total	Not Tested		Tested		Level 1		Level 2		Level 3		Level 4		Proficient (Levels 3 & 4)	
	#	#	%	#	%	#	%	#	%	#	%	#	%	#	%
All Students	48	10	21%	38	79%	10	26%	8	21%	17	45%	3	8%	20	53%
Female	25	8	32%	17	68%	5	29%	3	18%	8	47%	1	6%	9	53%
Male	23	2	9%	21	91%	5	24%	5	24%	9	43%	2	10%	11	52%
General Education Students	37	6	16%	31	84%	7	23%	6	19%	16	52%	2	6%	18	58%
Students with Disabilities	11	4	36%	7	64%	3	43%	2	29%	1	14%	1	14%	2	29%
White	46	9	20%	37	80%	—	—	—	—	—	—	—	—	—	—
Multiracial	2	1	50%	1	50%	—	—	—	—	—	—	—	—	—	—
Small Group Total: Race & Ethnicity	48	10	21%	38	79%	10	26%	8	21%	17	45%	3	8%	20	53%
Economically Disadvantaged	25	8	32%	17	68%	7	41%	3	18%	7	41%	0	0%	7	41%
Not Economically Disadvantaged	23	2	9%	21	91%	3	14%	5	24%	10	48%	3	14%	13	62%
Non-English Language Learner	48	10	21%	38	79%	10	26%	8	21%	17	45%	3	8%	20	53%
Not in Foster Care	48	10	21%	38	79%	10	26%	8	21%	17	45%	3	8%	20	53%
Not Homeless	48	10	21%	38	79%	10	26%	8	21%	17	45%	3	8%	20	53%
Not Migrant	48	10	21%	38	79%	10	26%	8	21%	17	45%	3	8%	20	53%
Parent Not in Armed Forces	48	10	21%	38	79%	10	26%	8	21%	17	45%	3	8%	20	53%

### GRADE 7 MATH RESULTS



Subgroup	Total	Not Tested		Tested		Level 1		Level 2		Level 3		Level 4		Proficient (Levels 3 & 4)	
	#	#	%	#	%	#	%	#	%	#	%	#	%	#	%
All Students	43	15	35%	28	65%	6	21%	6	21%	10	36%	6	21%	16	57%
Female	19	10	53%	9	47%	2	22%	2	22%	3	33%	2	22%	5	56%
Male	24	5	21%	19	79%	4	21%	4	21%	7	37%	4	21%	11	58%
General Education Students	29	9	31%	20	69%	1	5%	5	25%	9	45%	5	25%	14	70%
Students with Disabilities	14	6	43%	8	57%	5	63%	1	13%	1	13%	1	13%	2	25%
White	41	14	34%	27	66%	—	—	—	—	—	—	—	—	—	—
Multiracial	2	1	50%	1	50%	—	—	—	—	—	—	—	—	—	—
Small Group Total: Race & Ethnicity	43	15	35%	28	65%	6	21%	6	21%	10	36%	6	21%	16	57%
Economically Disadvantaged	22	8	36%	14	64%	5	36%	2	14%	3	21%	4	29%	7	50%
Not Economically Disadvantaged	21	7	33%	14	67%	1	7%	4	29%	7	50%	2	14%	9	64%
Non-English Language Learner	43	15	35%	28	65%	6	21%	6	21%	10	36%	6	21%	16	57%
Not In Foster Care	43	15	35%	28	65%	6	21%	6	21%	10	36%	6	21%	16	57%
Not Homeless	43	15	35%	28	65%	6	21%	6	21%	10	36%	6	21%	16	57%
Not Migrant	43	15	35%	28	65%	6	21%	6	21%	10	36%	6	21%	16	57%
Parent Not in Armed Forces	43	15	35%	28	65%	6	21%	6	21%	10	36%	6	21%	16	57%

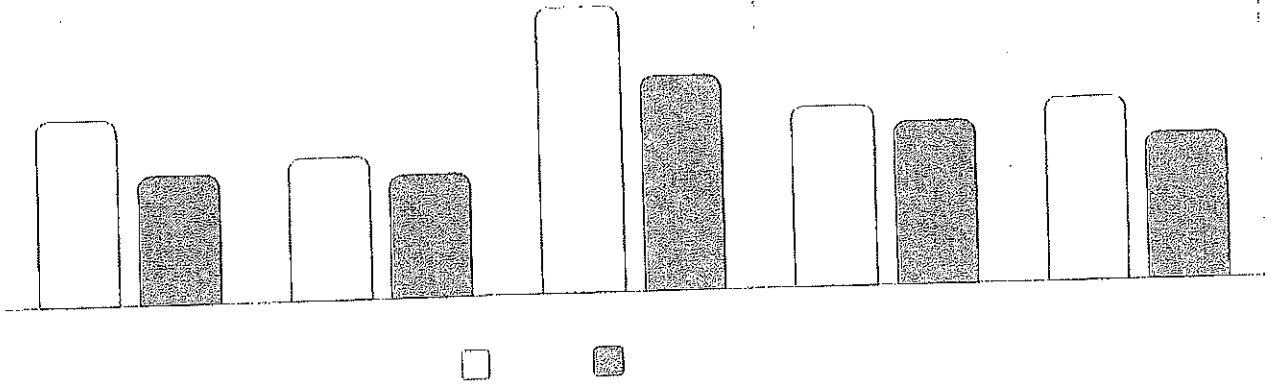
### GRADE 8 MATH RESULTS



Subgroup	Total	Not Tested		Tested		Level 1		Level 2		Level 3		Level 4		Proficient (Levels 3 & 4)	
	#	#	%	#	%	#	%	#	%	#	%	#	%	#	%
All Students	47	7	15%	40	85%	15	38%	7	18%	15	38%	3	8%	18	45%
Female	21	3	14%	18	86%	5	28%	4	22%	7	39%	2	11%	9	50%
Male	26	4	15%	22	85%	10	45%	3	14%	8	36%	1	5%	9	41%
General Education Students	38	4	11%	34	89%	10	29%	7	21%	14	41%	3	9%	17	50%
Students with Disabilities	9	3	33%	6	67%	5	83%	0	0%	1	17%	0	0%	1	17%
White	45	6	13%	39	87%	—	—	—	—	—	—	—	—	—	—
Multiracial	2	1	50%	1	50%	—	—	—	—	—	—	—	—	—	—
Small Group Total: Race & Ethnicity	47	7	15%	40	85%	15	38%	7	18%	15	38%	3	8%	18	45%
Economically Disadvantaged	20	4	20%	16	80%	8	50%	4	25%	4	25%	0	0%	4	25%
Not Economically Disadvantaged	27	3	11%	24	89%	7	29%	3	13%	11	46%	3	13%	14	58%
Non-English Language Learner	47	7	15%	40	85%	15	38%	7	18%	15	38%	3	8%	18	45%
Not in Foster Care	47	7	15%	40	85%	15	38%	7	18%	15	38%	3	8%	18	45%
Homeless	2	1	50%	1	50%	—	—	—	—	—	—	—	—	—	—
Not Homeless	45	6	13%	39	87%	—	—	—	—	—	—	—	—	—	—
Not Migrant	47	7	15%	40	85%	15	38%	7	18%	15	38%	3	8%	18	45%
Parent Not in Armed Forces	47	7	15%	40	85%	15	38%	7	18%	15	38%	3	8%	18	45%

## GRADES 5 & 8 SCIENCE RESULTS (2024-25)

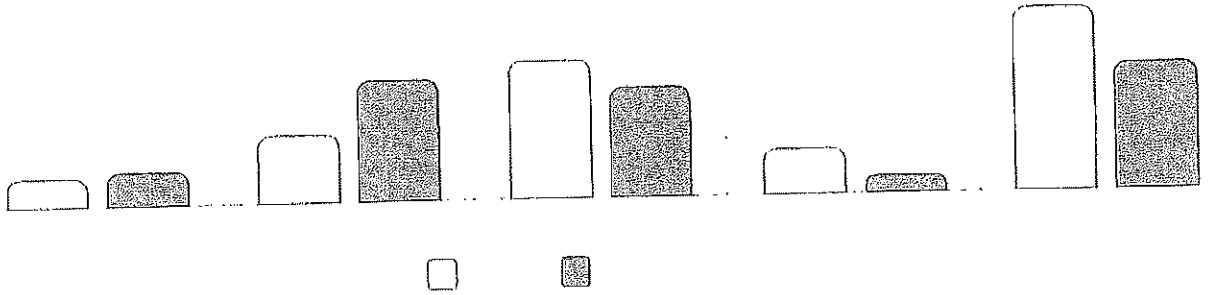
### SUMMARY RESULTS



Grade	Total #	Not Tested		Tested		Level 1		Level 2		Level 3		Level 4 & Above		Proficient (Levels 3 & Above)	
		#	%	#	%	#	%	#	%	#	%	#	%		
Grade 5	53	4	8%	49	92%	5	10%	12	24%	24	49%	8	16%	32	65%
Grade 8	47	17	36%	30	64%	1	3%	14	47%	15	50%	0	0%	15	50%
Regents 8	—	—	—	11	23%	0	0%	0	0%	7	64%	4	36%	11	100%
Combined 8	47	6	13%	41	87%	1	2%	14	34%	22	54%	4	10%	26	63%
Grades 5 & 8	100	10	10%	90	90%	6	7%	26	29%	46	51%	12	13%	58	64%

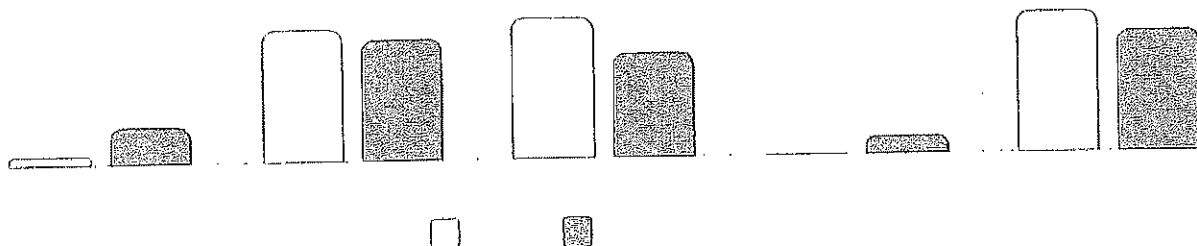
See report card Glossary and Guide for criteria used to include students in this table, as well as business rules for suppressions (displayed as "—" dash).

### GRADE 5 SCIENCE RESULTS



Subgroup	Total	Not Tested		Tested		Level 1		Level 2		Level 3		Level 4		Proficient (Levels 3 & 4)	
	#	#	%	#	%	#	%	#	%	#	%	#	%	#	%
All Students	53	4	8%	49	92%	5	10%	12	24%	24	49%	8	16%	32	65%
Female	31	3	10%	28	90%	0	0%	8	29%	15	54%	5	18%	20	71%
Male	22	1	5%	21	95%	5	24%	4	19%	9	43%	3	14%	12	57%
General Education Students	45	2	4%	43	96%	3	7%	11	26%	21	49%	8	19%	29	67%
Students with Disabilities	8	2	25%	6	75%	2	33%	1	17%	3	50%	0	0%	3	50%
Black or African American	1	0	0%	1	100%	—	—	—	—	—	—	—	—	—	—
Hispanic or Latino	2	0	0%	2	100%	—	—	—	—	—	—	—	—	—	—
White	49	4	8%	45	92%	—	—	—	—	—	—	—	—	—	—
Multiracial	1	0	0%	1	100%	—	—	—	—	—	—	—	—	—	—
Small Group Total: Race & Ethnicity	53	4	8%	49	92%	5	10%	12	24%	24	49%	8	16%	32	65%
Economically Disadvantaged	23	2	9%	21	91%	2	10%	6	29%	11	52%	2	10%	13	62%
Not Economically Disadvantaged	30	2	7%	28	93%	3	11%	6	21%	13	46%	6	21%	19	68%
Non-English Language Learner	53	4	8%	49	92%	5	10%	12	24%	24	49%	8	16%	32	65%
Not in Foster Care	53	4	8%	49	92%	5	10%	12	24%	24	49%	8	16%	32	65%
Homeless	1	0	0%	1	100%	—	—	—	—	—	—	—	—	—	—
Not Homeless	52	4	8%	48	92%	—	—	—	—	—	—	—	—	—	—
Not Migrant	53	4	8%	49	92%	5	10%	12	24%	24	49%	8	16%	32	65%
Parent Not in Armed Forces	53	4	8%	49	92%	5	10%	12	24%	24	49%	8	16%	32	65%

### GRADE 8 SCIENCE RESULTS

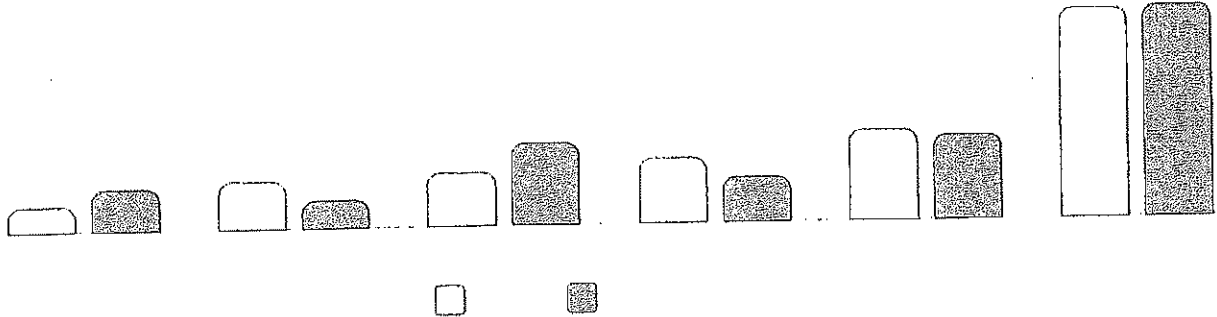


Subgroup	Total	Not Tested		Tested		Level 1		Level 2		Level 3		Level 4		Proficient (Levels 3 & 4)	
	#	#	%	#	%	#	%	#	%	#	%	#	%	#	%
All Students	47	17	36%	30	64%	1	3%	14	47%	15	50%	0	0%	15	50%
Female	21	7	33%	14	67%	1	7%	3	21%	10	71%	0	0%	10	71%
Male	26	10	38%	16	62%	0	0%	11	69%	5	31%	0	0%	5	31%
General Education Students	38	15	39%	23	61%	1	4%	10	43%	12	52%	0	0%	12	52%
Students with Disabilities	9	2	22%	7	78%	0	0%	4	57%	3	43%	0	0%	3	43%
White	45	16	36%	29	64%	—	—	—	—	—	—	—	—	—	—
Multiracial	2	1	50%	1	50%	—	—	—	—	—	—	—	—	—	—
Small Group Total: Race & Ethnicity	47	17	36%	30	64%	1	3%	14	47%	15	50%	0	0%	15	50%
Economically Disadvantaged	20	5	25%	15	75%	1	7%	8	53%	6	40%	0	0%	6	40%
Not Economically Disadvantaged	27	12	44%	15	56%	0	0%	6	40%	9	60%	0	0%	9	60%
Non-English Language Learner	47	17	36%	30	64%	1	3%	14	47%	15	50%	0	0%	15	50%
Not in Foster Care	47	17	36%	30	64%	1	3%	14	47%	15	50%	0	0%	15	50%
Homeless	2	1	50%	1	50%	—	—	—	—	—	—	—	—	—	—
Not Homeless	45	16	36%	29	64%	—	—	—	—	—	—	—	—	—	—
Not Migrant	47	17	36%	30	64%	1	3%	14	47%	15	50%	0	0%	15	50%
Parent Not in Armed Forces	47	17	36%	30	64%	1	3%	14	47%	15	50%	0	0%	15	50%

### ANNUAL REGENTS EXAMINATIONS (2024 - 25)

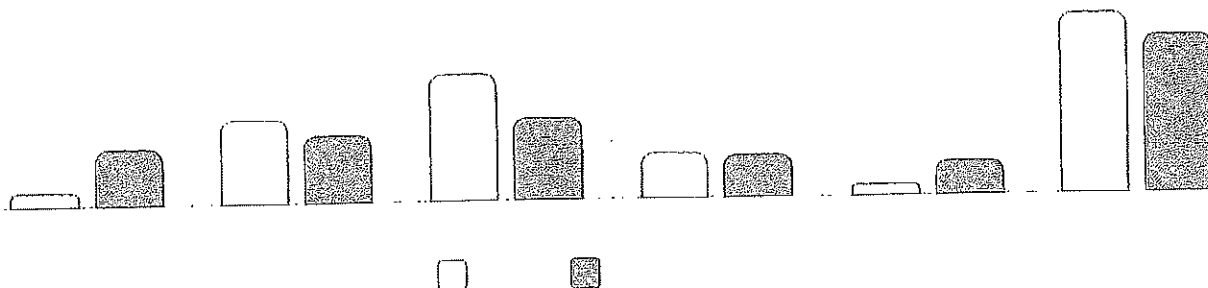
Annual Regents examination results are those administered in August, January, and June of the reporting year.

### ANNUAL REGENTS EXAMINATION IN ELA (2024-25)



Subgroup	Tested	Level 1		Level 2		Level 3		Level 4		Level 5		Proficient (Levels 3 & Above)	
		#	%	#	%	#	%	#	%	#	%	#	%
All Students	47	4	9%	8	17%	9	19%	11	23%	15	32%	35	74%
Female	26	0	0%	3	12%	6	23%	6	23%	11	42%	23	88%
Male	21	4	19%	5	24%	3	14%	5	24%	4	19%	12	57%
General Education Students	38	1	3%	5	13%	6	16%	11	29%	15	39%	32	84%
Students with Disabilities	9	3	33%	3	33%	3	33%	0	0%	0	0%	3	33%
White	46	—	—	—	—	—	—	—	—	—	—	—	—
Multiracial	1	—	—	—	—	—	—	—	—	—	—	—	—
Small Group Total: Race & Ethnicity	47	4	9%	8	17%	9	19%	11	23%	15	32%	35	74%
Economically Disadvantaged	23	3	13%	5	22%	5	22%	5	22%	5	22%	15	65%
Not Economically Disadvantaged	24	1	4%	3	13%	4	17%	6	25%	10	42%	20	83%
Non-English Language Learner	47	4	9%	8	17%	9	19%	11	23%	15	32%	35	74%
Not in Foster Care	47	4	9%	8	17%	9	19%	11	23%	15	32%	35	74%
Not Homeless	47	4	9%	8	17%	9	19%	11	23%	15	32%	35	74%
Not Migrant	47	4	9%	8	17%	9	19%	11	23%	15	32%	35	74%
Parent Not in Armed Forces	47	4	9%	8	17%	9	19%	11	23%	15	32%	35	74%

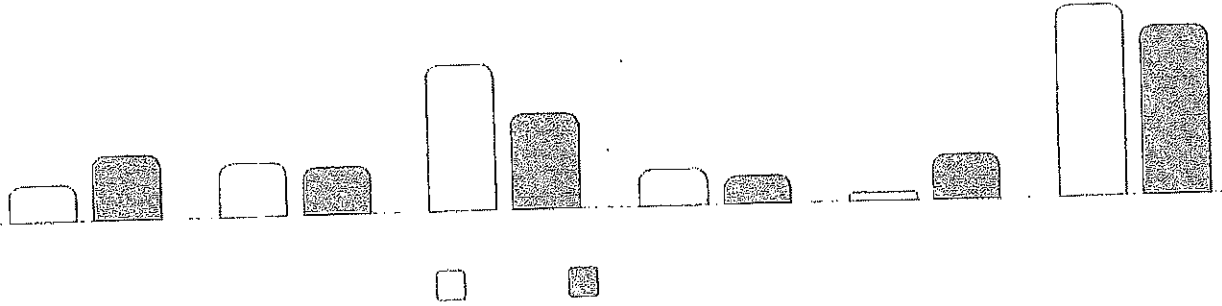
### ANNUAL REGENTS EXAMINATION IN ALGEBRA I (2024-25)



Subgroup	Tested	Level 1		Level 2		Level 3		Level 4		Level 5		Proficient (Levels 3 & Above)	
		#	%	#	%	#	%	#	%	#	%	#	%
All Students	56	3	5%	17	30%	25	45%	9	16%	2	4%	36	64%
Female	19	2	11%	4	21%	8	42%	4	21%	1	5%	13	68%
Male	37	1	3%	13	35%	17	46%	5	14%	1	3%	23	62%
General Education Students	43	1	2%	11	26%	20	47%	9	21%	2	5%	31	72%
Students with Disabilities	13	2	15%	6	46%	5	38%	0	0%	0	0%	5	38%
Black or African American	1	—	—	—	—	—	—	—	—	—	—	—	—
White	52	—	—	—	—	—	—	—	—	—	—	—	—
Multiracial	3	—	—	—	—	—	—	—	—	—	—	—	—
Small Group Total: Race & Ethnicity	56	3	5%	17	30%	25	45%	9	16%	2	4%	36	64%
Economically Disadvantaged	28	3	11%	8	29%	16	57%	1	4%	0	0%	17	61%
Not Economically Disadvantaged	28	0	0%	9	32%	9	32%	8	29%	2	7%	19	68%
Non-English Language Learner	56	3	5%	17	30%	25	45%	9	16%	2	4%	36	64%
Not in Foster Care	56	3	5%	17	30%	25	45%	9	16%	2	4%	36	64%
Not Homeless	56	3	5%	17	30%	25	45%	9	16%	2	4%	36	64%
Not Migrant	56	3	5%	17	30%	25	45%	9	16%	2	4%	36	64%
Parent Not in Armed Forces	56	3	5%	17	30%	25	45%	9	16%	2	4%	36	64%

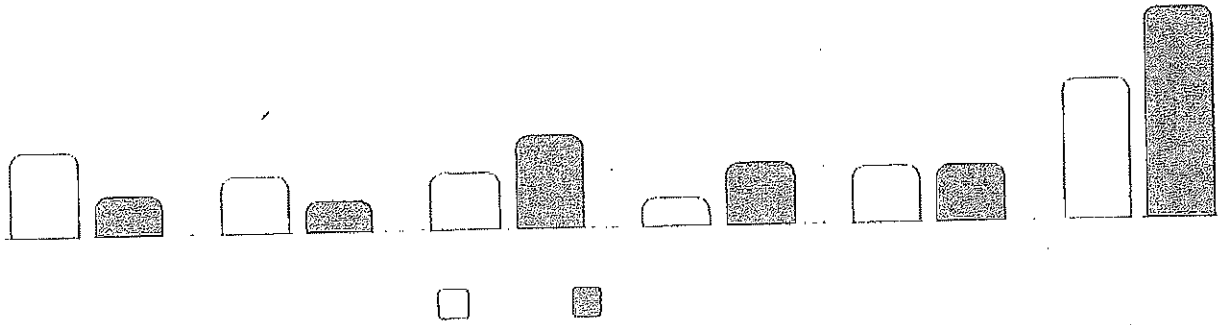


## ANNUAL REGENTS EXAMINATION IN GEOMETRY (NEW) (JUNE 2025)



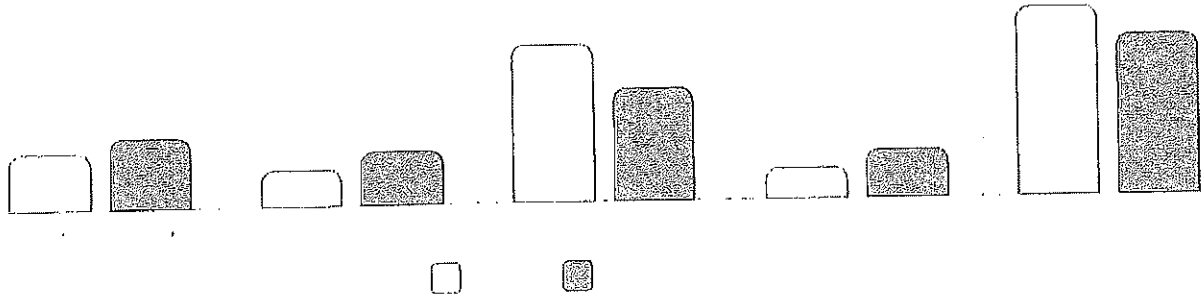
Subgroup	Tested	Level 1		Level 2		Level 3		Level 4		Level 5		Proficient (Levels 3 & Above)	
		#	%	#	%	#	%	#	%	#	%	#	%
All Students	31	4	13%	6	19%	16	52%	4	13%	1	3%	21	68%
Female	17	3	18%	3	18%	9	53%	1	6%	1	6%	11	65%
Male	14	1	7%	3	21%	7	50%	3	21%	0	0%	10	71%
General Education Students	31	4	13%	6	19%	16	52%	4	13%	1	3%	21	68%
Hispanic or Latino	1	—	—	—	—	—	—	—	—	—	—	—	—
White	30	—	—	—	—	—	—	—	—	—	—	—	—
Small Group Total: Race & Ethnicity	31	4	13%	6	19%	16	52%	4	13%	1	3%	21	68%
Economically Disadvantaged	13	2	15%	2	15%	7	54%	1	8%	1	8%	9	69%
Not Economically Disadvantaged	18	2	11%	4	22%	9	50%	3	17%	0	0%	12	67%
Non-English Language Learner	31	4	13%	6	19%	16	52%	4	13%	1	3%	21	68%
Not in Foster Care	31	4	13%	6	19%	16	52%	4	13%	1	3%	21	68%
Not Homeless	31	4	13%	6	19%	16	52%	4	13%	1	3%	21	68%
Not Migrant	31	4	13%	6	19%	16	52%	4	13%	1	3%	21	68%
Parent Not in Armed Forces	31	4	13%	6	19%	16	52%	4	13%	1	3%	21	68%

### ANNUAL REGENTS EXAMINATION IN ALGEBRA II (2024-25)



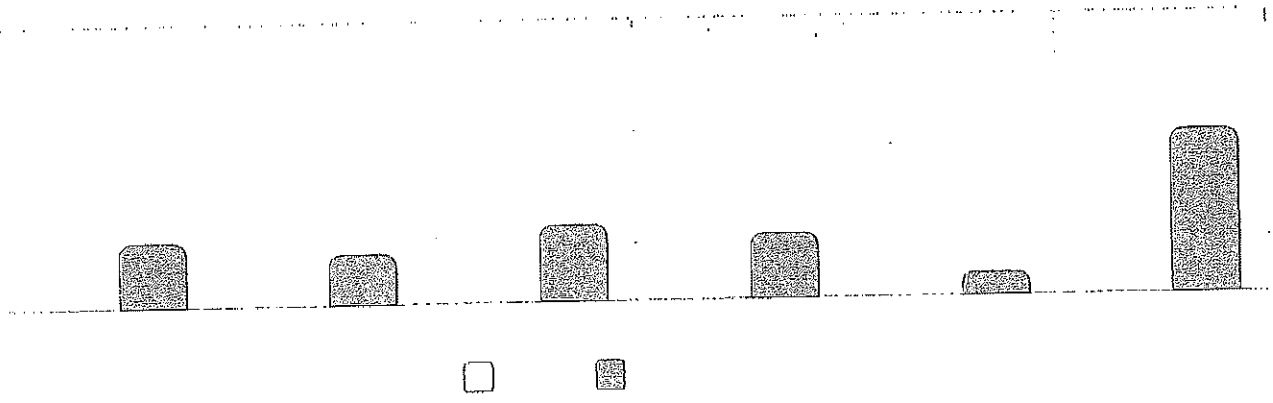
Subgroup	Tested	Level 1		Level 2		Level 3		Level 4		Level 5		Proficient (Levels 3 & Above)	
		#	%	#	%	#	%	#	%	#	%	#	%
All Students	10	3	30%	2	20%	2	20%	1	10%	2	20%	5	50%
Female	6	—	—	—	—	—	—	—	—	—	—	—	—
Male	4	—	—	—	—	—	—	—	—	—	—	—	—
Small Group Total: Gender	10	3	30%	2	20%	2	20%	1	10%	2	20%	5	50%
General Education Students	10	3	30%	2	20%	2	20%	1	10%	2	20%	5	50%
White	9	—	—	—	—	—	—	—	—	—	—	—	—
Multiracial	1	—	—	—	—	—	—	—	—	—	—	—	—
Small Group Total: Race & Ethnicity	10	3	30%	2	20%	2	20%	1	10%	2	20%	5	50%
Economically Disadvantaged	3	—	—	—	—	—	—	—	—	—	—	—	—
Not Economically Disadvantaged	7	—	—	—	—	—	—	—	—	—	—	—	—
Non-English Language Learner	10	3	30%	2	20%	2	20%	1	10%	2	20%	5	50%
Not in Foster Care	10	3	30%	2	20%	2	20%	1	10%	2	20%	5	50%
Not Homeless	10	3	30%	2	20%	2	20%	1	10%	2	20%	5	50%
Not Migrant	10	3	30%	2	20%	2	20%	1	10%	2	20%	5	50%
Parent Not in Armed Forces	10	3	30%	2	20%	2	20%	1	10%	2	20%	5	50%

### ANNUAL REGENTS EXAMINATION IN LIVING ENVIRONMENT (2024-25)



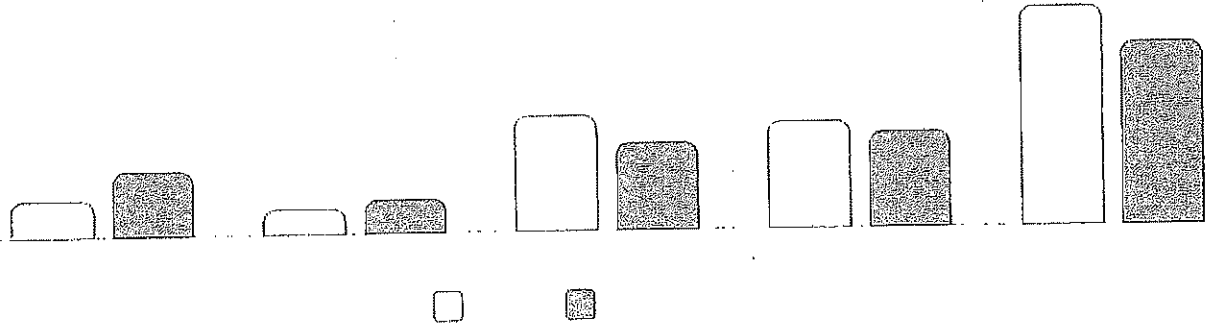
Subgroup	Tested	Level 1		Level 2		Level 3		Level 4		Proficient (Levels 3 & 4)	
		#	%	#	%	#	%	#	%	#	%
All Students	61	12	20%	8	13%	34	56%	7	11%	41	67%
Female	22	3	14%	3	14%	14	64%	2	9%	16	73%
Male	39	9	23%	5	13%	20	51%	5	13%	25	64%
General Education Students	44	5	11%	3	7%	29	66%	7	16%	36	82%
Students with Disabilities	17	7	41%	5	29%	5	29%	0	0%	5	29%
Black or African American	1	—	—	—	—	—	—	—	—	—	—
White	56	10	18%	7	13%	32	57%	7	13%	39	70%
Multiracial	4	—	—	—	—	—	—	—	—	—	—
Small Group Total: Race & Ethnicity	5	2	40%	1	20%	2	40%	0	0%	2	40%
Economically Disadvantaged	30	9	30%	3	10%	18	60%	0	0%	18	60%
Not Economically Disadvantaged	31	3	10%	5	16%	16	52%	7	23%	23	74%
Non-English Language Learner	61	12	20%	8	13%	34	56%	7	11%	41	67%
Not in Foster Care	61	12	20%	8	13%	34	56%	7	11%	41	67%
Not Homeless	61	12	20%	8	13%	34	56%	7	11%	41	67%
Not Migrant	61	12	20%	8	13%	34	56%	7	11%	41	67%
Parent Not in Armed Forces	61	12	20%	8	13%	34	56%	7	11%	41	67%

## ANNUAL REGENTS EXAMINATION IN LIFE SCIENCE: BIOLOGY (JUNE 2025)



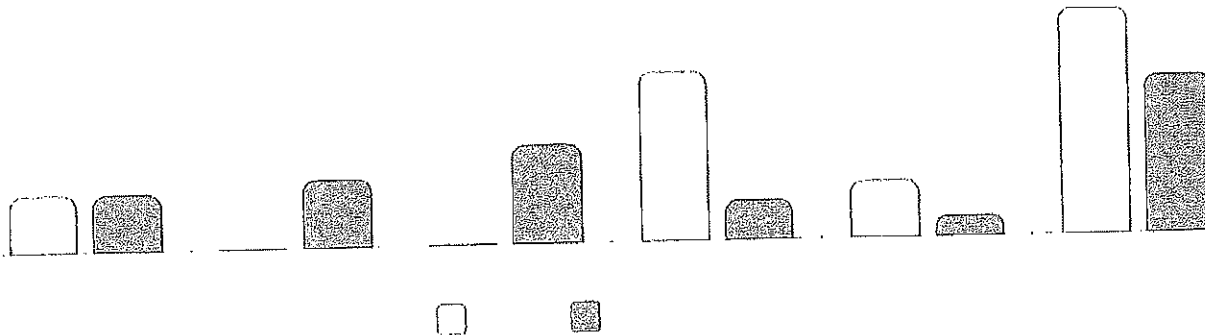
Subgroup	Tested	Level 1		Level 2		Level 3		Level 4		Level 5		Proficient (Levels 3 & Above)	
		#	%	#	%	#	%	#	%	#	%	#	%
All Students	2	—	—	—	—	—	—	—	—	—	—	—	—
Male	2	—	—	—	—	—	—	—	—	—	—	—	—
Small Group Total: Gender	2	—	—	—	—	—	—	—	—	—	—	—	—
General Education Students	2	—	—	—	—	—	—	—	—	—	—	—	—
White	2	—	—	—	—	—	—	—	—	—	—	—	—
Small Group Total: Race & Ethnicity	2	—	—	—	—	—	—	—	—	—	—	—	—
Economically Disadvantaged	1	—	—	—	—	—	—	—	—	—	—	—	—
Not Economically Disadvantaged	1	—	—	—	—	—	—	—	—	—	—	—	—
Non-English Language Learner	2	—	—	—	—	—	—	—	—	—	—	—	—
Not in Foster Care	2	—	—	—	—	—	—	—	—	—	—	—	—
Not Homeless	2	—	—	—	—	—	—	—	—	—	—	—	—
Not Migrant	2	—	—	—	—	—	—	—	—	—	—	—	—
Parent Not in Armed Forces	2	—	—	—	—	—	—	—	—	—	—	—	—

### ANNUAL REGENTS EXAMINATION IN PHYSICAL SETTING/EARTH SCIENCE (2024-25)



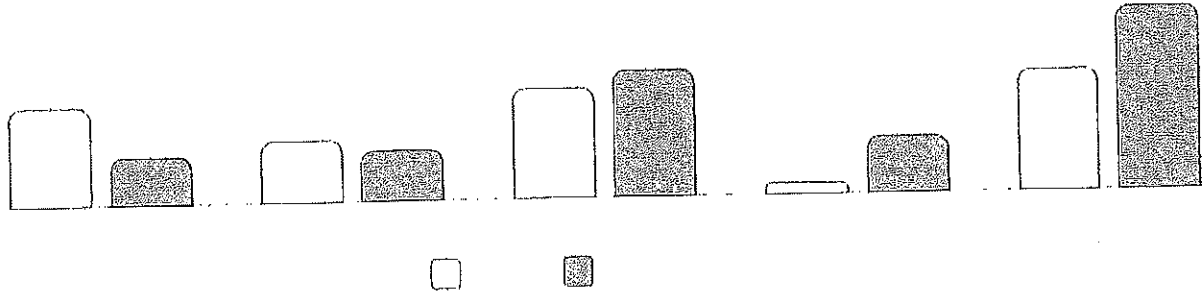
Subgroup	Tested	Level 1		Level 2		Level 3		Level 4		Proficient (Levels 3 & 4)	
		#	%	#	%	#	%	#	%	#	%
All Students	32	4	13%	3	9%	13	41%	12	38%	25	78%
Female	15	1	7%	1	7%	6	40%	7	47%	13	87%
Male	17	3	18%	2	12%	7	41%	5	29%	12	71%
General Education Students	29	—	—	—	—	—	—	—	—	—	—
Students with Disabilities	3	—	—	—	—	—	—	—	—	—	—
Hispanic or Latino	1	—	—	—	—	—	—	—	—	—	—
White	31	—	—	—	—	—	—	—	—	—	—
Small Group Total: Race & Ethnicity	32	4	13%	3	9%	13	41%	12	38%	25	78%
Economically Disadvantaged	13	3	23%	0	0%	6	46%	4	31%	10	77%
Not Economically Disadvantaged	19	1	5%	3	16%	7	37%	8	42%	15	79%
Non-English Language Learner	32	4	13%	3	9%	13	41%	12	38%	25	78%
Not in Foster Care	32	4	13%	3	9%	13	41%	12	38%	25	78%
Not Homeless	32	4	13%	3	9%	13	41%	12	38%	25	78%
Not Migrant	32	4	13%	3	9%	13	41%	12	38%	25	78%
Parent Not in Armed Forces	32	4	13%	3	9%	13	41%	12	38%	25	78%

### ANNUAL REGENTS EXAMINATION IN EARTH AND SPACE SCIENCES (JUNE 2025)



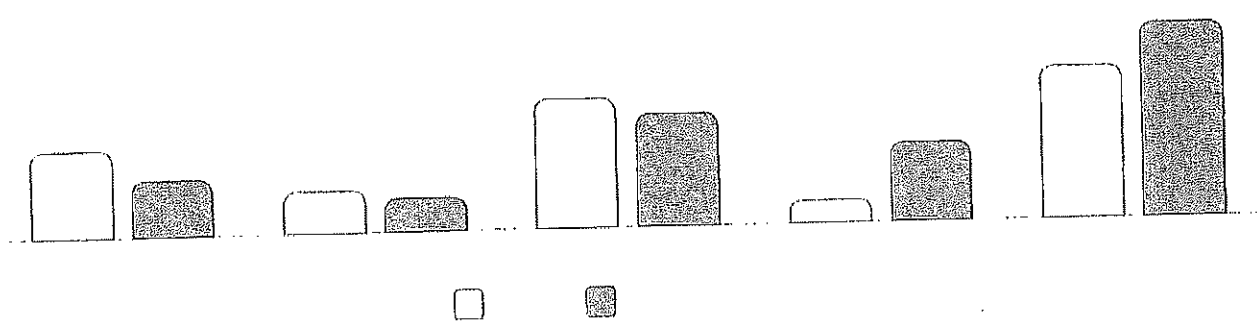
Subgroup	Tested	Level 1		Level 2		Level 3		Level 4		Level 5		Proficient (Levels 3 & Above)	
		#	%	#	%	#	%	#	%	#	%	#	%
All Students	5	1	20%	0	0%	0	0%	3	60%	1	20%	4	80%
Male	5	1	20%	0	0%	0	0%	3	60%	1	20%	4	80%
General Education Students	4	—	—	—	—	—	—	—	—	—	—	—	—
Students with Disabilities	1	—	—	—	—	—	—	—	—	—	—	—	—
Hispanic or Latino	1	—	—	—	—	—	—	—	—	—	—	—	—
White	4	—	—	—	—	—	—	—	—	—	—	—	—
Small Group Total: Race & Ethnicity	5	1	20%	0	0%	0	0%	3	60%	1	20%	4	80%
Economically Disadvantaged	2	—	—	—	—	—	—	—	—	—	—	—	—
Not Economically Disadvantaged	3	—	—	—	—	—	—	—	—	—	—	—	—
Non-English Language Learner	5	1	20%	0	0%	0	0%	3	60%	1	20%	4	80%
Not in Foster Care	5	1	20%	0	0%	0	0%	3	60%	1	20%	4	80%
Not Homeless	5	1	20%	0	0%	0	0%	3	60%	1	20%	4	80%
Not Migrant	5	1	20%	0	0%	0	0%	3	60%	1	20%	4	80%
Parent Not in Armed Forces	5	1	20%	0	0%	0	0%	3	60%	1	20%	4	80%

### ANNUAL REGENTS EXAMINATION IN PHYSICAL SETTING/CHEMISTRY (2024-25)



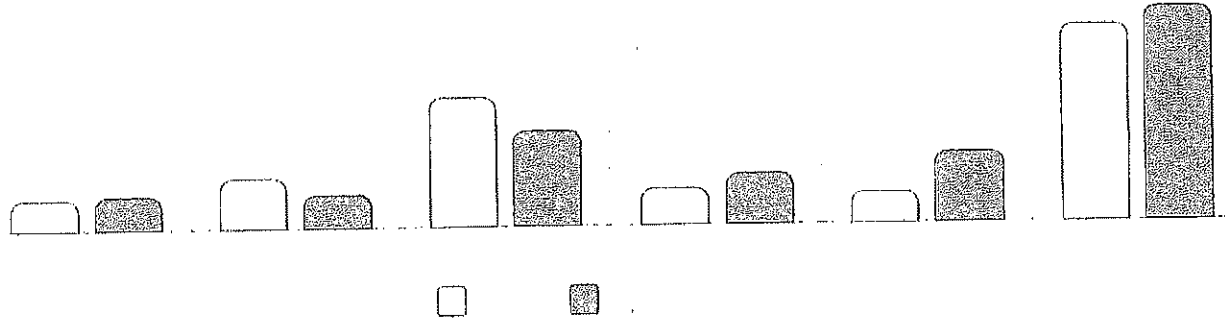
Subgroup	Tested	Level 1		Level 2		Level 3		Level 4		Proficient (Levels 3 & 4)	
		#	%	#	%	#	%	#	%	#	%
All Students	23	8	35%	5	22%	9	39%	1	4%	10	43%
Female	13	5	38%	3	23%	5	38%	0	0%	5	38%
Male	10	3	30%	2	20%	4	40%	1	10%	5	50%
General Education Students	21	—	—	—	—	—	—	—	—	—	—
Students with Disabilities	2	—	—	—	—	—	—	—	—	—	—
White	22	—	—	—	—	—	—	—	—	—	—
Multiracial	1	—	—	—	—	—	—	—	—	—	—
Small Group Total: Race & Ethnicity	23	8	35%	5	22%	9	39%	1	4%	10	43%
Economically Disadvantaged	9	2	22%	4	44%	3	33%	0	0%	3	33%
Not Economically Disadvantaged	14	6	43%	1	7%	6	43%	1	7%	7	50%
Non-English Language Learner	23	8	35%	5	22%	9	39%	1	4%	10	43%
Not in Foster Care	23	8	35%	5	22%	9	39%	1	4%	10	43%
Not Homeless	23	8	35%	5	22%	9	39%	1	4%	10	43%
Not Migrant	23	8	35%	5	22%	9	39%	1	4%	10	43%
Parent Not in Armed Forces	23	8	35%	5	22%	9	39%	1	4%	10	43%

### ANNUAL REGENTS EXAMINATION IN PHYSICAL SETTING/PHYSICS (2024-25)



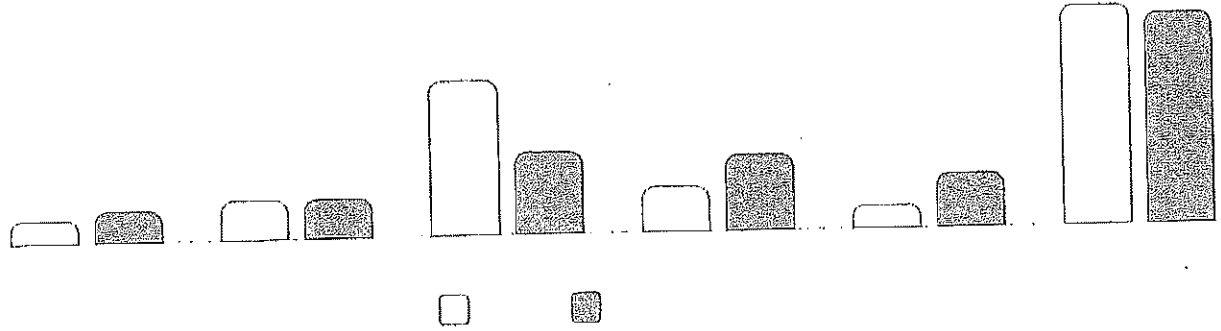
Subgroup	Tested	Level 1		Level 2		Level 3		Level 4		Proficient (Levels 3 & 4)	
		#	%	#	%	#	%	#	%	#	%
All Students	13	4	31%	2	15%	6	46%	1	8%	7	54%
Female	11	—	—	—	—	—	—	—	—	—	—
Male	2	—	—	—	—	—	—	—	—	—	—
Small Group Total: Gender	13	4	31%	2	15%	6	46%	1	8%	7	54%
General Education Students	13	4	31%	2	15%	6	46%	1	8%	7	54%
White	13	4	31%	2	15%	6	46%	1	8%	7	54%
Economically Disadvantaged	6	3	50%	1	17%	2	33%	0	0%	2	33%
Not Economically Disadvantaged	7	1	14%	1	14%	4	57%	1	14%	5	71%
Non-English Language Learner	13	4	31%	2	15%	6	46%	1	8%	7	54%
Not in Foster Care	13	4	31%	2	15%	6	46%	1	8%	7	54%
Not Homeless	13	4	31%	2	15%	6	46%	1	8%	7	54%
Not Migrant	13	4	31%	2	15%	6	46%	1	8%	7	54%
Parent Not in Armed Forces	13	4	31%	2	15%	6	46%	1	8%	7	54%

## ANNUAL REGENTS EXAMINATION IN GLOBAL HISTORY & GEOGRAPHY II (2024-25)



Subgroup	Tested	Level 1		Level 2		Level 3		Level 4		Level 5		Proficient (Levels 3 & Above)	
		#	%	#	%	#	%	#	%	#	%	#	%
All Students	61	7	11%	11	18%	28	46%	8	13%	7	11%	43	70%
Female	23	—	—	—	—	—	—	—	—	—	—	—	—
Male	37	5	14%	7	19%	15	41%	5	14%	5	14%	25	68%
Non-Binary	1	—	—	—	—	—	—	—	—	—	—	—	—
Small Group Total: Gender	24	2	8%	4	17%	13	54%	3	13%	2	8%	18	75%
General Education Students	43	1	2%	4	9%	24	56%	7	16%	7	16%	38	88%
Students with Disabilities	18	6	33%	7	39%	4	22%	1	6%	0	0%	5	28%
Black or African American	1	—	—	—	—	—	—	—	—	—	—	—	—
Hispanic or Latino	2	—	—	—	—	—	—	—	—	—	—	—	—
White	54	5	9%	10	19%	27	50%	7	13%	5	9%	39	72%
Multiracial	4	—	—	—	—	—	—	—	—	—	—	—	—
Small Group Total: Race & Ethnicity	7	2	29%	1	14%	1	14%	1	14%	2	29%	4	57%
Economically Disadvantaged	31	5	16%	6	19%	13	42%	4	13%	3	10%	20	65%
Not Economically Disadvantaged	30	2	7%	5	17%	15	50%	4	13%	4	13%	23	77%
Non-English Language Learner	61	7	11%	11	18%	28	46%	8	13%	7	11%	43	70%
Not In Foster Care	61	7	11%	11	18%	28	46%	8	13%	7	11%	43	70%
Not Homeless	61	7	11%	11	18%	28	46%	8	13%	7	11%	43	70%
Not Migrant	61	7	11%	11	18%	28	46%	8	13%	7	11%	43	70%
Parent Not In Armed Forces	61	7	11%	11	18%	28	46%	8	13%	7	11%	43	70%

# ANNUAL REGENTS EXAMINATION IN U.S. HISTORY & GOVERNMENT (2024-25)



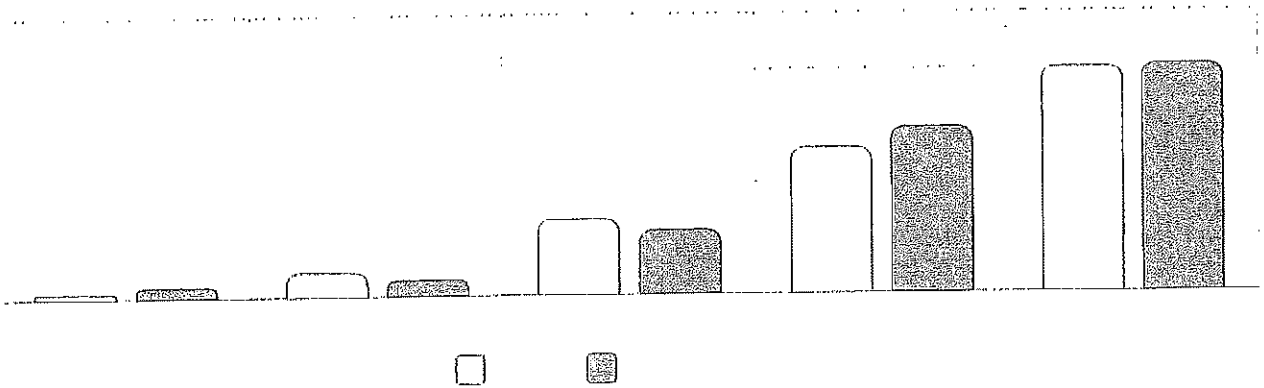
Subgroup	Tested	Level 1		Level 2		Level 3		Level 4		Level 5		Proficient (Levels 3 & Above)	
		#	%	#	%	#	%	#	%	#	%	#	%
All Students	51	4	8%	7	14%	28	55%	8	16%	4	8%	40	78%
Female	29	1	3%	1	3%	19	66%	5	17%	3	10%	27	93%
Male	22	3	14%	6	27%	9	41%	3	14%	1	5%	13	59%
General Education Students	41	2	5%	2	5%	25	61%	8	20%	4	10%	37	90%
Students with Disabilities	10	2	20%	5	50%	3	30%	0	0%	0	0%	3	30%
White	50	—	—	—	—	—	—	—	—	—	—	—	—
Multiracial	1	—	—	—	—	—	—	—	—	—	—	—	—
Small Group Total: Race & Ethnicity	51	4	8%	7	14%	28	55%	8	16%	4	8%	40	78%
Economically Disadvantaged	26	3	12%	4	15%	14	54%	4	15%	1	4%	19	73%
Not Economically Disadvantaged	25	1	4%	3	12%	14	56%	4	16%	3	12%	21	84%
Non-English Language Learner	51	4	8%	7	14%	28	55%	8	16%	4	8%	40	78%
Not in Foster Care	51	4	8%	7	14%	28	55%	8	16%	4	8%	40	78%
Not Homeless	51	4	8%	7	14%	28	55%	8	16%	4	8%	40	78%
Not Migrant	51	4	8%	7	14%	28	55%	8	16%	4	8%	40	78%
Parent Not in Armed Forces	51	4	8%	7	14%	28	55%	8	16%	4	8%	40	78%

### TOTAL COHORT REGENTS EXAMINATION RESULTS

A High School Cohort consists of all students reported with a first date of entry into Grade 9 anywhere as of a reporting year (July 1 – June 30). Ungraded students not reported with a first date of entry into Grade 9 are included in the cohort of the reporting year in which they turn 17 years of age. Results are reported four years after these students first enter grade 9.

Due to COVID-19 and changes to New York State testing requirements, Regents examinations in June 2020 through January 2022 were canceled, with the exception of the June 2021 Regents Examinations in ELA, Algebra I, Living Environment, and Physical Setting/Earth Science. The U.S. History & Government examination from June 2022 through January 2023 was also canceled.

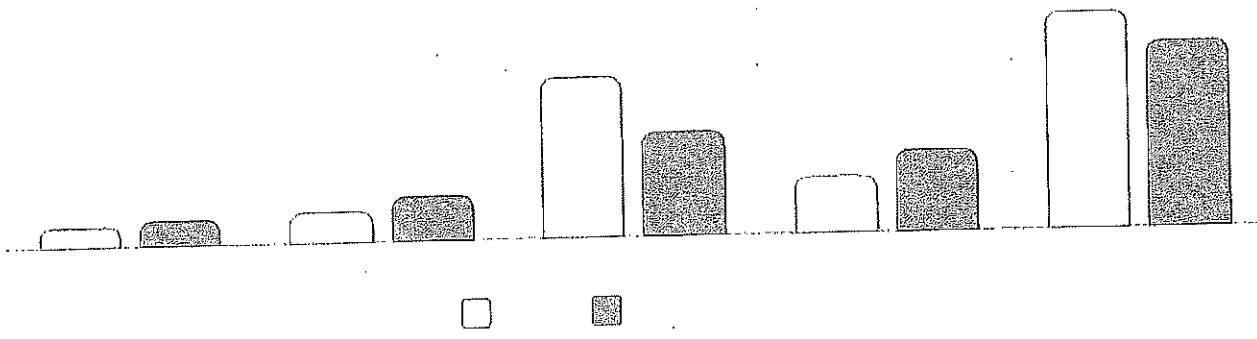
### 2021 TOTAL COHORT REGENTS IN ELA



Subgroup	Cohort	Not Tested		Tested		Level 1		Level 2		Level 3		Level 4 & Above		Proficient (Levels 3 & Above)	
		#	%	#	%	#	%	#	%	#	%	#	%	#	%
All Students	44	4	9%	40	91%	1	2%	4	9%	12	27%	23	52%	35	80%
Female	20	1	5%	19	95%	1	5%	2	10%	4	20%	12	60%	16	80%
Male	24	3	13%	21	88%	0	0%	2	8%	8	33%	11	46%	19	79%
General Education Students	36	2	6%	34	94%	0	0%	2	6%	9	25%	23	64%	32	89%
Students with Disabilities	8	2	25%	6	75%	1	13%	2	25%	3	38%	0	0%	3	38%
White	44	4	9%	40	91%	1	2%	4	9%	12	27%	23	52%	35	80%
Economically Disadvantaged	19	3	16%	16	84%	1	5%	2	11%	5	26%	8	42%	13	68%
Not Economically Disadvantaged	25	1	4%	24	96%	0	0%	2	8%	7	28%	15	60%	22	88%
Non-English Language Learner	44	4	9%	40	91%	1	2%	4	9%	12	27%	23	52%	35	80%

Subgroup	Cohort	Not Tested		Tested		Level 1		Level 2		Level 3		Level 4 & Above		Proficient (Levels 3 & Above)	
		#	%	#	%	#	%	#	%	#	%	#	%	#	%
Not in Foster Care	44	4	9%	40	91%	1	2%	4	9%	12	27%	23	52%	35	80%
Not Homeless	44	4	9%	40	91%	1	2%	4	9%	12	27%	23	52%	35	80%
Not Migrant	44	4	9%	40	91%	1	2%	4	9%	12	27%	23	52%	35	80%
Parent Not in Armed Forces	44	4	9%	40	91%	1	2%	4	9%	12	27%	23	52%	35	80%

**2021 TOTAL COHORT REGENTS IN MATH**



Subgroup	Cohort	Not Tested		Tested		Level 1		Level 2		Level 3		Level 4 & Above		Proficient (Levels 3 & Above)	
		#	%	#	%	#	%	#	%	#	%	#	%	#	%
All Students	44	2	5%	42	95%	3	7%	5	11%	25	57%	9	20%	34	77%
Female	20	1	5%	19	95%	2	10%	1	5%	10	50%	6	30%	16	80%
Male	24	1	4%	23	96%	1	4%	4	17%	15	63%	3	13%	18	75%
General Education Students	36	0	0%	36	100%	2	6%	5	14%	20	56%	9	25%	29	81%
Students with Disabilities	8	2	25%	6	75%	1	13%	0	0%	5	63%	0	0%	5	63%
White	44	2	5%	42	95%	3	7%	5	11%	25	57%	9	20%	34	77%
Economically Disadvantaged	19	1	5%	18	95%	0	0%	2	11%	14	74%	2	11%	16	84%
Not Economically Disadvantaged	25	1	4%	24	96%	3	12%	3	12%	11	44%	7	28%	18	72%
Non-English Language Learner	44	2	5%	42	95%	3	7%	5	11%	25	57%	9	20%	34	77%

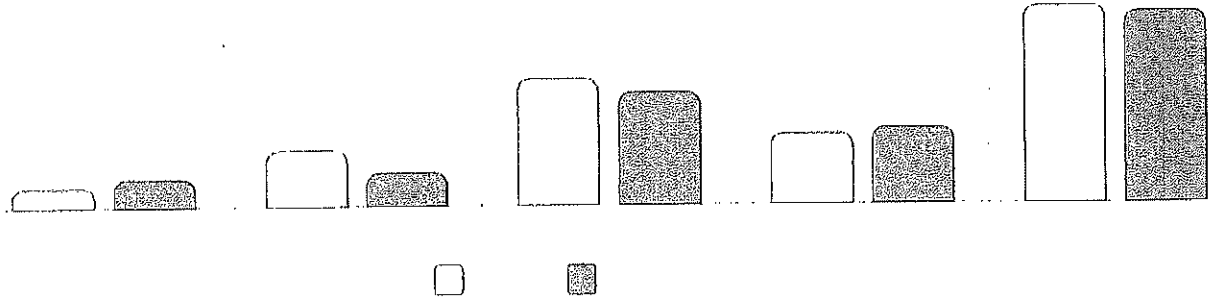
Subgroup	Cohort	Not Tested		Tested		Level 1		Level 2		Level 3		Level 4 & Above		Proficient (Levels 3 & Above)	
		#	%	#	%	#	%	#	%	#	%	#	%	#	%
Not In Foster Care	44	2	5%	42	95%	3	7%	5	11%	25	57%	9	20%	34	77%
Not Homeless	44	2	5%	42	95%	3	7%	5	11%	25	57%	9	20%	34	77%
Not Migrant	44	2	5%	42	95%	3	7%	5	11%	25	57%	9	20%	34	77%
Parent Not in Armed Forces	44	2	5%	42	95%	3	7%	5	11%	25	57%	9	20%	34	77%

**2021 TOTAL COHORT EXEMPTIONS IN MATH**

Subgroup	Total Exempt	Exempt, Not Tested		Exempt, Tested	
		#	%	#	%
All Students	10	0	0	10	100
Female	5	0	0	5	100
Male	5	0	0	5	100
General Education Students	10	0	0	10	100
White	10	0	0	10	100
Economically Disadvantaged	3	0	0	3	100
Not Economically Disadvantaged	7	0	0	7	100
Non-English Language Learner	10	0	0	10	100
Not In Foster Care	10	0	0	10	100
Not Homeless	10	0	0	10	100
Not Migrant	10	0	0	10	100
Parent Not in Armed Forces	10	0	0	10	100

See report card Glossary and Guide for criteria used to include students in this table.

**2021 TOTAL COHORT REGENTS IN SCIENCE**



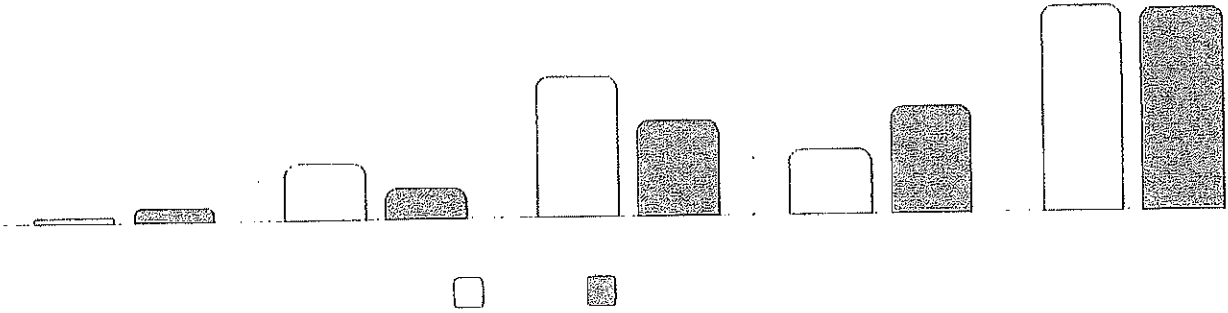
Subgroup	Cohort	Not Tested		Tested		Level 1		Level 2		Level 3		Level 4 & Above		Proficient (Levels 3 & Above)	
		#	%	#	%	#	%	#	%	#	%	#	%	#	%
All Students	44	1	2%	43	98%	3	7%	9	20%	20	45%	11	25%	31	70%
Female	20	0	0%	20	100%	1	5%	6	30%	10	50%	3	15%	13	65%
Male	24	1	4%	23	96%	2	8%	3	13%	10	42%	8	33%	18	75%
General Education Students	36	0	0%	36	100%	2	6%	5	14%	19	53%	10	28%	29	81%
Students with Disabilities	8	1	13%	7	88%	1	13%	4	50%	1	13%	1	13%	2	25%
White	44	1	2%	43	98%	3	7%	9	20%	20	45%	11	25%	31	70%
Economically Disadvantaged	19	0	0%	19	100%	1	5%	5	26%	9	47%	4	21%	13	68%
Not Economically Disadvantaged	25	1	4%	24	96%	2	8%	4	16%	11	44%	7	28%	18	72%
Non-English Language Learner	44	1	2%	43	98%	3	7%	9	20%	20	45%	11	25%	31	70%
Not in Foster Care	44	1	2%	43	98%	3	7%	9	20%	20	45%	11	25%	31	70%
Not Homeless	44	1	2%	43	98%	3	7%	9	20%	20	45%	11	25%	31	70%
Not Migrant	44	1	2%	43	98%	3	7%	9	20%	20	45%	11	25%	31	70%
Parent Not in Armed Forces	44	1	2%	43	98%	3	7%	9	20%	20	45%	11	25%	31	70%

**2021 TOTAL COHORT EXEMPTIONS IN SCIENCE**

Subgroup	Total Exempt	Exempt, Not Tested		Exempt, Tested	
		#	%	#	%
All Students	13	0	0	13	100
Female	6	0	0	6	100
Male	7	0	0	7	100
General Education Students	13	0	0	13	100
White	13	0	0	13	100
Economically Disadvantaged	3	0	0	3	100
Not Economically Disadvantaged	10	0	0	10	100
Non-English Language Learner	13	0	0	13	100
Not in Foster Care	13	0	0	13	100
Not Homeless	13	0	0	13	100
Not Migrant	13	0	0	13	100
Parent Not in Armed Forces	13	0	0	13	100

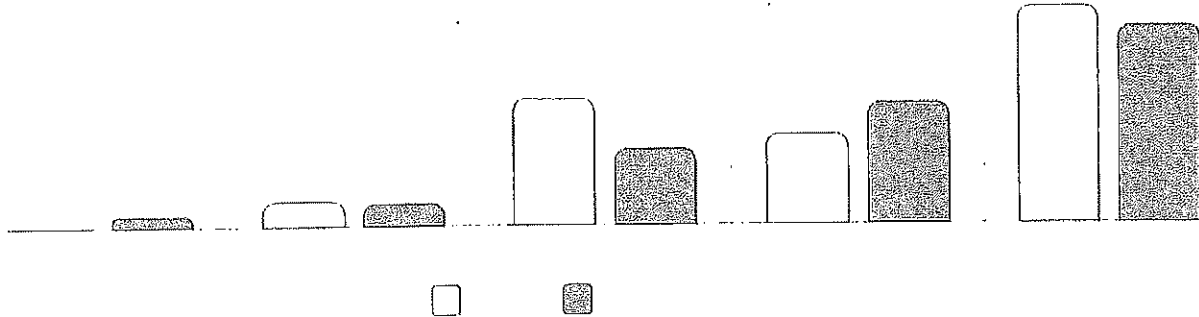
See report card Glossary and Guide for criteria used to include students in this table.

### 2021 TOTAL COHORT REGENTS IN GLOBAL HISTORY & GEOGRAPHY



Subgroup	Cohort	Not Tested		Tested		Level 1		Level 2		Level 3		Level 4 & Above		Proficient (Levels 3 & Above)	
		#	%	#	%	#	%	#	%	#	%	#	%	#	%
All Students	44	2	5%	42	95%	1	2%	9	20%	22	50%	10	23%	32	73%
Female	20	0	0%	20	100%	1	5%	6	30%	6	30%	7	35%	13	65%
Male	24	2	8%	22	92%	0	0%	3	13%	16	67%	3	13%	19	79%
General Education Students	36	1	3%	35	97%	0	0%	6	17%	19	53%	10	28%	29	81%
Students with Disabilities	8	1	13%	7	88%	1	13%	3	38%	3	38%	0	0%	3	38%
White	44	2	5%	42	95%	1	2%	9	20%	22	50%	10	23%	32	73%
Economically Disadvantaged	19	1	5%	18	95%	1	5%	3	16%	9	47%	5	26%	14	74%
Not Economically Disadvantaged	25	1	4%	24	96%	0	0%	6	24%	13	52%	5	20%	18	72%
Non-English Language Learner	44	2	5%	42	95%	1	2%	9	20%	22	50%	10	23%	32	73%
Not in Foster Care	44	2	5%	42	95%	1	2%	9	20%	22	50%	10	23%	32	73%
Not Homeless	44	2	5%	42	95%	1	2%	9	20%	22	50%	10	23%	32	73%
Not Migrant	44	2	5%	42	95%	1	2%	9	20%	22	50%	10	23%	32	73%
Parent Not in Armed Forces	44	2	5%	42	95%	1	2%	9	20%	22	50%	10	23%	32	73%

### 2021 TOTAL COHORT REGENTS IN U.S. HISTORY & GOVERNMENT



Subgroup	Cohort	Not Tested		Tested		Level 1		Level 2		Level 3		Level 4 & Above		Proficient (Levels 3 & Above)	
		#	%	#	%	#	%	#	%	#	%	#	%	#	%
All Students	44	6	14%	38	86%	0	0%	4	9%	20	45%	14	32%	34	77%
Female	20	2	10%	18	90%	0	0%	2	10%	8	40%	8	40%	16	80%
Male	24	4	17%	20	83%	0	0%	2	8%	12	50%	6	25%	18	75%
General Education Students	36	2	6%	34	94%	0	0%	2	6%	18	50%	14	39%	32	89%
Students with Disabilities	8	4	50%	4	50%	0	0%	2	25%	2	25%	0	0%	2	25%
White	44	6	14%	38	86%	0	0%	4	9%	20	45%	14	32%	34	77%
Economically Disadvantaged	19	4	21%	15	79%	0	0%	1	5%	8	42%	6	32%	14	74%
Not Economically Disadvantaged	25	2	8%	23	92%	0	0%	3	12%	12	48%	8	32%	20	80%
Non-English Language Learner	44	6	14%	38	86%	0	0%	4	9%	20	45%	14	32%	34	77%
Not in Foster Care	44	6	14%	38	86%	0	0%	4	9%	20	45%	14	32%	34	77%
Not Homeless	44	6	14%	38	86%	0	0%	4	9%	20	45%	14	32%	34	77%
Not Migrant	44	6	14%	38	86%	0	0%	4	9%	20	45%	14	32%	34	77%
Parent Not in Armed Forces	44	6	14%	38	86%	0	0%	4	9%	20	45%	14	32%	34	77%

### NEW YORK STATE ENGLISH AS A SECOND LANGUAGE ACHIEVEMENT TEST (2024-25)

New York State English as a Second Language Achievement Tests (NYSESLAT) are administered in grades K through 12 to all English Language Learners (ELLs). ELLs are students who, by reason of foreign birth or ancestry, speak or understand a language other than English and speak or understand little or no English, and require support to become proficient in English and are identified pursuant to Section 154.3 of Commissioner's Regulations.

Grade	Total		Not Tested		Tested		Entering		Emerging		Transitioning		Expanding		Commanding (Proficient)	
	#	%	#	%	#	%	#	%	#	%	#	%	#	%	#	%
Kindergrarten	1	0%	0	0%	1	100%	—	—	—	—	—	—	—	—	—	—
Grade 1	1	0%	0	0%	1	100%	—	—	—	—	—	—	—	—	—	—
Grade 3	1	0%	0	0%	1	100%	—	—	—	—	—	—	—	—	—	—

### NEW YORK STATE ALTERNATE ASSESSMENT (2024-25)

New York State Alternate Assessments (NYSAA) are administered to ungraded students with severe cognitive disabilities whose ages are equivalent to graded students in grades 3 through 8 and high school level.

Grade/Subject	Total		Not Tested		Tested		Level 1		Level 2		Level 3		Level 4		Proficient (Levels 3 & 4)	
	#	%	#	%	#	%	#	%	#	%	#	%	#	%	#	%
Grade 6 ELA	2	0%	0	0%	2	100%	—	—	—	—	—	—	—	—	—	—
Grade 6 Math	2	0%	0	0%	2	100%	—	—	—	—	—	—	—	—	—	—
Grade 7 ELA	1	0%	0	0%	1	100%	—	—	—	—	—	—	—	—	—	—
Grade 7 Math	1	0%	0	0%	1	100%	—	—	—	—	—	—	—	—	—	—
Secondary-Level ELA	2	50%	1	50%	1	50%	—	—	—	—	—	—	—	—	—	—
Secondary-Level Math	2	50%	1	50%	1	50%	—	—	—	—	—	—	—	—	—	—
Secondary-Level Science	2	50%	1	50%	1	50%	—	—	—	—	—	—	—	—	—	—

See report card Glossary and Guide for criteria used to include students in this table.

### NATIONAL ASSESSMENT OF EDUCATION PROGRESS (NAEP) RESULTS (2024)

National Assessment of Education Progress (NAEP) are reported for statewide (New York State) and national results only. District- and school-level results are not reported for NAEP.

**NEW YORK STATE NAEP GRADE 4**

SUBGROUP	READING				MATH			
	BELOW BASIC	BASIC	PROFICIENT	ADVANCED	BELOW BASIC	BASIC	PROFICIENT	ADVANCED
All Students	41%	28%	22%	9%	28%	36%	29%	8%
Students with Disabilities	73%	18%	8%	1%	63%	28%	7%	2%
American Indian/Alaska Native	*	*	*	*	*	*	*	*
Asian/Pacific Islander	26%	25%	30%	19%	14%	26%	40%	20%
Black	55%	29%	13%	3%	44%	39%	15%	2%
Hispanic	51%	27%	16%	6%	39%	38%	20%	3%
White	32%	31%	26%	11%	19%	35%	36%	10%
Two or more races	39%	23%	25%	14%	12%	40%	33%	14%
English Language Learners	79%	17%	3%	0%	59%	29%	12%	1%
Economically Disadvantaged	52%	28%	16%	5%	39%	37%	20%	3%

\*There are not sufficient data for this subgroup.

Group values may not sum to 100% due to rounding.

**NEW YORK STATE NAEP GRADE 8**

SUBGROUP	READING				MATH			
	BELOW BASIC	BASIC	PROFICIENT	ADVANCED	BELOW BASIC	BASIC	PROFICIENT	ADVANCED
All Students	35%	34%	26%	5%	42%	31%	18%	8%
Students with Disabilities	65%	25%	10%	1%	73%	19%	6%	2%
American Indian/Alaska Native	*	*	*	*	*	*	*	*
Asian/Pacific Islander	17%	32%	38%	13%	19%	24%	30%	27%
Black	42%	37%	19%	2%	56%	28%	13%	2%
Hispanic	47%	32%	19%	2%	59%	29%	10%	2%
White	28%	36%	30%	7%	29%	36%	25%	10%
Two or more races	*	*	*	*	45%	32%	17%	6%
English Language Learners	85%	10%	4%	1%	83%	13%	4%	1%
Economically Disadvantaged	44%	34%	19%	3%	54%	29%	14%	4%

\*There are not sufficient data for this subgroup.

Group values may not sum to 100% due to rounding.

### NEW YORK STATE NAEP PARTICIPATION RATES

	Grade 4 Participation Rate		Grade 8 Participation Rate	
	READING	MATH	READING	MATH
All Students	89%	89%	79%	81%
Students with Disabilities	85%	91%	87%	93%
English Language Learners	83%	84%	78%	90%

### NATIONAL NAEP GRADE 4

SUBGROUP	READING				MATH			
	BELOW BASIC	BASIC	PROFICIENT	ADVANCED	BELOW BASIC	BASIC	PROFICIENT	ADVANCED
All Students	41%	29%	22%	8%	24%	36%	31%	9%
Students with Disabilities	72%	18%	8%	1%	53%	31%	13%	3%
American Indian/Alaska Native	59%	26%	13%	3%	43%	37%	18%	2%
Asian/Pacific Islander	23%	26%	31%	20%	12%	24%	39%	25%
Black	57%	27%	13%	3%	41%	40%	17%	2%
Hispanic	52%	27%	16%	4%	34%	39%	23%	4%
White	30%	31%	28%	11%	14%	35%	39%	12%
Two or more races	37%	29%	24%	10%	20%	36%	33%	11%
English Language Learners	71%	21%	7%	1%	48%	36%	14%	2%
Economically Disadvantaged	53%	28%	16%	4%	35%	40%	22%	3%

Group values may not sum to 100% due to rounding.

**NATIONAL NAEP GRADE 8**

SUBGROUP	READING				MATH			
	BELOW BASIC	BASIC	PROFICIENT	ADVANCED	BELOW BASIC	BASIC	PROFICIENT	ADVANCED
All Students	34%	37%	25%	4%	41%	32%	19%	8%
Students with Disabilities	67%	25%	8%	1%	75%	18%	5%	2%
American Indian/Alaska Native	45%	38%	16%	1%	60%	29%	9%	3%
Asian/Pacific Islander	17%	30%	40%	13%	18%	26%	28%	29%
Black	48%	36%	15%	1%	63%	27%	8%	2%
Hispanic	45%	36%	17%	1%	55%	30%	12%	2%
White	25%	39%	32%	5%	28%	36%	27%	10%
Two or more races	30%	36%	30%	4%	38%	33%	20%	9%
English Language Learners	71%	25%	5%	0%	77%	18%	4%	1%
Economically Disadvantaged	46%	37%	16%	1%	55%	31%	12%	3%

Group values may not sum to 100% due to rounding.

**NATIONAL NAEP PARTICIPATION RATES**

	Grade 4 Participation Rate		Grade 8 Participation Rate	
	READING	MATH	READING	MATH
All Students	92%	92%	88%	89%
Students with Disabilities	89%	90%	89%	90%
English Language Learners	92%	93%	91%	92%

**ELEMENTARY/MIDDLE CHRONIC ABSENTEEISM**

Subgroup	Students Enrolled	Students Chronically Absent	Chronic Absenteeism Rate
All Students	364	98	26.9%
Asian or Native Hawaiian/Other Pacific Islander	1	—	—
Black or African American	1	—	—
Hispanic or Latino	5	—	—
Multiracial	19	—	—
White	338	88	26%
English Language Learner	2	—	—

Subgroup	Students Enrolled	Students Chronically Absent	Chronic Absenteeism Rate
Students with Disabilities	93	25	26.9%
Economically Disadvantaged	187	60	32.1%

### SECONDARY CHRONIC ABSENTEEISM

Subgroup	Students Enrolled	Students Chronically Absent	Chronic Absenteeism Rate
All Students	191	68	35.6%
Black or African American	1	—	—
Hispanic or Latino	2	—	—
Multiracial	6	—	—
White	182	65	35.7%
Students with Disabilities	41	19	46.3%
Economically Disadvantaged	93	38	40.9%

### TOTAL COHORT GRADUATION RATE (2024-25)

Graduation Rate data are for students who first entered grade 9, four years prior to this reporting year. Graduates are as of August following the close of the reporting year. Click on High School Graduation Rate Data report to see district and state comparisons and to filter on gender, ethnicity, and other student subgroups or by 5- and 6-year graduation rates.

Subgroup	Total Enrolled	GRAD RATE		REGENTS WITH ADVANCED DESIGNATION		REGENTS DIPLOMA		LOCAL DIPLOMA		NON DIPLOMA CRED		STILL ENROLLED		GED TRANSFER		DROPOUT	
		#	%	#	%	#	%	#	%	#	%	#	%	#	%		
All Students	44	38	86%	11	25%	25	57%	2	5%	0	0%	3	7%	0	0%	3	7%
Female	20	17	85%	6	30%	11	55%	0	0%	0	0%	2	10%	0	0%	1	5%
Male	24	21	88%	5	21%	14	58%	2	8%	0	0%	1	4%	0	0%	2	8%
Non-binary	0	0	0%	0	0%	0	0%	0	0%	0	0%	0	0%	0	0%	0	0%
General Education Students	36	34	94%	11	31%	23	64%	0	0%	0	0%	0	0%	0	0%	2	6%
Students with Disabilities	8	4	50%	0	0%	2	25%	2	25%	0	0%	3	38%	0	0%	1	13%
American Indian or Alaska Native	0	0	0%	0	0%	0	0%	0	0%	0	0%	0	0%	0	0%	0	0%
Asian or Native Hawaiian/Other Pacific Islander	0	0	0%	0	0%	0	0%	0	0%	0	0%	0	0%	0	0%	0	0%

Subgroup	Total Enrolled	GRAD RATE		REGENTS WITH ADVANCED DESIGNATION		REGENTS DIPLOMA		LOCAL DIPLOMA		NON DIPLOMA CRED		STILL ENROLLED		GED TRANSFER		DROPOUT	
		#	%	#	%	#	%	#	%	#	%	#	%	#	%	#	%
Black or African American	0	0	0%	0	0%	0	0%	0	0%	0	0%	0	0%	0	0%	0	0%
Hispanic or Latino	0	0	0%	0	0%	0	0%	0	0%	0	0%	0	0%	0	0%	0	0%
White	44	38	86%	11	25%	25	57%	2	5%	0	0%	3	7%	0	0%	3	7%
Multiracial	0	0	0%	0	0%	0	0%	0	0%	0	0%	0	0%	0	0%	0	0%
Economically Disadvantaged	19	15	79%	4	21%	9	47%	2	11%	0	0%	1	5%	0	0%	3	16%
Not Economically Disadvantaged	25	23	92%	7	28%	16	64%	0	0%	0	0%	2	8%	0	0%	0	0%
English Language Learner	0	0	0%	0	0%	0	0%	0	0%	0	0%	0	0%	0	0%	0	0%
Non-English Language Learner	44	38	86%	11	25%	25	57%	2	5%	0	0%	3	7%	0	0%	3	7%
In Foster Care	0	0	0%	0	0%	0	0%	0	0%	0	0%	0	0%	0	0%	0	0%
Not in Foster Care	44	38	86%	11	25%	25	57%	2	5%	0	0%	3	7%	0	0%	3	7%
Homeless	0	0	0%	0	0%	0	0%	0	0%	0	0%	0	0%	0	0%	0	0%
Not Homeless	44	38	86%	11	25%	25	57%	2	5%	0	0%	3	7%	0	0%	3	7%
Migrant	0	0	0%	0	0%	0	0%	0	0%	0	0%	0	0%	0	0%	0	0%
Not Migrant	44	38	86%	11	25%	25	57%	2	5%	0	0%	3	7%	0	0%	3	7%
Parent in Armed Forces	0	0	0%	0	0%	0	0%	0	0%	0	0%	0	0%	0	0%	0	0%
Parent Not in Armed Forces	44	38	86%	11	25%	25	57%	2	5%	0	0%	3	7%	0	0%	3	7%

**CIVIL RIGHTS DATA COLLECTION (CRDC) (2020-21)**

Civil Right Data Collection (CRDC) data are reported to the United States Department of Education by districts and include data on measures of school quality, climate, and safety as well as enrollment in preschool programs and accelerated coursework to earn postsecondary credit. For more information, visit the Civil Rights Data Collection, Office for Civil Rights.

CRDC Data (18.04 megabytes)  
 CRDC Glossary and Guide

# BERLIN CSD

## 2023-24 School Year Financial Transparency Report

The tables below display per pupil expenditures for charter schools, traditional public schools, as well as district averages that may be higher or lower than an individual school.

All amounts shown on this report (except exclusions) are per pupil of the entire school or district, unless otherwise noted.

| Business Rules

### Comparison: How do per pupil expenditures compare?

P-12 ENROLLMENT

625

THIS SCHOOL

N/A

DISTRICT OR DISTRICT OF LOCATION

\$37,168.16

### How Much is Being Spent on Instruction and Administration?

For school districts, entries 1 through 13 represent the average per pupil expenditures for all schools in the district. For schools (including charter schools), entries 1 through 13 represent the per pupil expenditures attributable to the school.

Total spending (entry 13) represents all non-excluded per pupil expenditures.

Current Operation Expenditures	BERLIN CSD
» 1. Instruction	\$21,381.74
» 2. Support Services, Pupils	\$1,042.13
» 3. Support Services, Instructional Staff	\$607.49

Current Operation Expenditures	BERLIN CSD
» 4. Support Services, General Admin	\$1,043.46
» 5. Support Services, School Admin	\$839.02
» 6. Support Services, Operation and Maintenance of Plant	\$3,247.15
» 7. Support Services, Student Transportation	\$3,919.09
» 8. Business/Central/Other Support Services	\$2,030.60
» 9. Food services	\$736.33
» 10. Enterprise operations	\$0.00
» 11. Other	\$0.00
» 12. Districtwide Current Operations (expenditures attributable to the school that are not reported separately in the categories described above)	\$2,321.15
13. Total Expenditures	\$37,168.16

## Detailed Spending: How Much is Spent Per Pupil for Special Education and General Education?

The Special Education Detail below is a subset of spending. To calculate per pupil expenditures, enrollment for special education is used. The expenditure value reflects school and central level expenditures. For charter schools, data represents per pupil expenditures in the selected school.

The General Education Detail below reflects Total District Expenditures less Special Education Expenditures. To calculate per pupil expenditures, district PK-12 enrollment is used. Excluded expenditures are not included in Total Expenditures.

School and District Level Expenditures	BERLIN CSD
Special Education	\$28,479.05
General Education	\$31,107.82

# Exclusions: What Other Spending is Not Included in the Per Pupil Amounts Shown Above?

The final section represents total expenditures, with the following exclusions that were not included in the per pupil expenditure calculations above: tuition, debt service, and other.

“Other Exclusions” include expenditures such as tuition for students attending BOCES full-time, services provided to nonpublic or charter schools, prekindergarten payments to community-based organizations, and community services.

Central Cost(1-3 & Percent Excluded from Total)

Combined Cost(Total Expenditures)

Excluded Expenditures	BERLIN CSD
1. Charter School Tuition	\$0.00
2. Debt Service	\$1,921,819.00
3. Other	\$2,285,375.00
Percent Excluded from Total	15%
Total Expenditures and Exclusions	\$27,437,293.00

© COPYRIGHT NEW YORK STATE EDUCATION DEPARTMENT, ALL RIGHTS RESERVED.

THIS DOCUMENT WAS CREATED ON: APRIL 17, 2026, 1:17 PM EST

Form Due May 12, 2026

2026-2027 Salary Threshold =  
\$179,000

In response to legislative efforts to encourage greater cost sharing in service provision and local government administration, we now provide a section for districts that share administrative staff to highlight these efforts for the upcoming school year. Each sharing district should identify in the form the other district(s) with which they will be sharing administrative staff for school year 2026-2027.

If you will be sharing a Superintendent, list the other district (or districts) in the text box. If you will be sharing other administrative staff required to be reported, please send an email to [EMSCMGTS@nysed.gov](mailto:EMSCMGTS@nysed.gov) indicating the title of the staff persons(s) as well as the other district(s) involved in the cost-sharing.

The salaries, benefits and other compensation reported in the form should reflect only the financial support or commitment that your district will be making. They should not reflect the total amounts budgeted to be paid by all participating districts over the school year.

Report Estimated Salaries in the Budget for the 2026-2027 School Year

Sections 1608 and 1716 of the Education Law  
(Please read the instructions and definitions before completing this form.)

Title	Salary	Employee Benefits	Other Remuneration
1. Superintendent of Schools	179,375	70,657	8,715

Please list the district or districts with which you will be sharing a superintendent (if applicable):

Associate, Assistant and Deputy Superintendents  
(Example Titles: Associate Superintendent for Instruction, Deputy Superintendent, Assistant Superintendent for Business, etc.)

2.			
3.			
4.			
5.			
6.			
7.			
8.			
9.			
10.			
11.			
12.			
13.			
14.			
15.			
16.			
17.			
18.			
19.			
20.			
21.			
22.			
23.			
24.			
25.			
26.			
27.			
28.			
29.			
30.			
31.			
32.			
33.			
34.			
35.			

Equalized Total Assessed Value 323,095,931

School District - 382001 Berlin CSD

Exemption Code	Exemption Name	Statutory Authority	Number of Exemptions	Total Equalized Value of Exemptions	Percent of Value Exempted
12100	NYS - GENERALLY	RPTL 404(1)	5	418,759	0.13
13100	CO - GENERALLY	RPTL 406(1)	4	748,965	0.23
13500	TOWN - GENERALLY	RPTL 406(1)	7	2,258,904	0.70
13510	TOWN - CEMETERY LAND	RPTL 446	1	15,862	0.00
13800	SCHOOL DISTRICT	RPTL 408	3	47,333,794	14.65
13870	SPEC DIST USED FOR PURPOSE EST	RPTL 410	2	120,690	0.04
25110	NONPROF CORP - RELIG(CONST PRO	RPTL 420-a	7	3,698,967	1.14
25300	NONPROF CORP - SPECIFIED USES	RPTL 420-b	4	295,158	0.09
26400	INC VOLUNTEER FIRE CO OR DEPT	RPTL 464(2)	3	1,628,827	0.50
27350	PRIVATELY OWNED CEMETERY LAND	RPTL 446	6	50,207	0.02
29350	TRUSTEES - HOSP, LIB, PLAYGROU	RPTL 438	1	382,414	0.12
41400	CLERGY	RPTL 460	1	10,345	0.00
41700	AGRICULTURAL BUILDING	RPTL 483	1	1,189,655	0.37
41720	AGRICULTURAL DISTRICT	AG-MKTS L 305	26	2,095,537	0.65
41730	AGRIC LAND-INDIV NOT IN AG DIS	AG MKTS L 306	4	604,579	0.19
41800	PERSONS AGE 65 OR OVER	RPTL 457	37	3,456,998	1.07
41824	LIVING QUARTERS FOR PARENTS AN	RPTL 469	1	83,248	0.03
41834	ENHANCED STAR	RPTL 425	103	10,233,792	3.17
41854	BASIC STAR 1999-2000	RPTL 425	184	7,448,872	2.31
41935	DISABILITIES AND LIMITED INCOM	RPTL 459-c	2	86,986	0.03
42100	SILOS, MANURE STORAGE TANKS,	RPTL 483-a	2	82,069	0.03
47460	FOREST LAND CERTD AFTER 8/74	RPTL 480-a	16	1,334,485	0.41

Equalized Total Assessed Value 323,095,931

School District - 382001 Berlin CSD

Exemption Code	Exemption Name	Statutory Authority	Number of Exemptions	Total Equalized Value of Exemptions	Percent of Value Exempted
47610	BUSINESS INVESTMENT PROPERTY P	RPTL 485-b	4	1,034,310	0.32
Total Exemptions Exclusive of System Exemptions:				84,623,423	26.19
Total System Exemptions:				0	0.00
Totals:				84,623,423	26.19

Values have been equalized using the Uniform Percentage of Value. The Exempt amounts do not take into consideration, payments in lieu of taxes or other payments for municipal services.

Amount, if any, attributable to payments in lieu of taxes: \_\_\_\_\_

Equalized Total Assessed Value 306,469,472

School District - 382001 Berlin CSD

Exemption Code	Exemption Name	Statutory Authority	Number of Exemptions	Total Equalized Value of Exemptions	Percent of Value Exempted
12100	NYS - GENERALLY	RPTL 404(1)	8	6,548,166	2.14
13100	CO - GENERALLY	RPTL 406(1)	7	848,000	0.28
13500	TOWN - GENERALLY	RPTL 406(1)	8	2,546,167	0.83
13510	TOWN - CEMETERY LAND	RPTL 446	1	667	0.00
13800	SCHOOL DISTRICT	RPTL 408	1	42,500	0.01
25110	NONPROF CORP - RELIG(CONST PRO	RPTL 420-a	6	3,428,667	1.12
25300	NONPROF CORP - SPECIFIED USES	RPTL 420-b	21	4,930,334	1.61
26400	INC VOLUNTEER FIRE CO OR DEPT	RPTL 464(2)	3	842,499	0.27
27350	PRIVATELY OWNED CEMETERY LAND	RPTL 446	9	18,833	0.01
29350	TRUSTEES - HOSP, LIB, PLAYGROU	RPTL 438	1	253,333	0.08
41130	ALT VET EX-WAR PERIOD-COMBAT	RPTL 458-a	3	0	0.00
41140	ALT VET EX-WAR PERIOD-DISABILI	RPTL 458-a	3	0	0.00
41150	COLD WAR VETERANS (10%)	RPTL 458-b	2	0	0.00
41400	CLERGY	RPTL 460	3	7,500	0.00
41700	AGRICULTURAL BUILDING	RPTL 483	4	187,501	0.06
41720	AGRICULTURAL DISTRICT	AG-MKTS L 305	2	111,970	0.04
41800	PERSONS AGE 65 OR OVER	RPTL 467	24	2,873,215	0.94
41804	PERSONS AGE 65 OR OVER	RPTL 467	5	126,530	0.04
41834	ENHANCED STAR	RPTL 425	137	12,544,885	4.09
41854	BASIC STAR 1999-2000	RPTL 425	205	6,932,485	2.26
41930	DISABILITIES AND LIMITED INCOM	RPTL 459-c	5	294,201	0.10

Equalized Total Assessed Value 306,469,472

School District - 382001 Berlin CSD

Exemption Code	Exemption Name	Statutory Authority	Number of Exemptions	Total Equalized Value of Exemptions	Percent of Value Exempted
47460	FOREST LAND CERTD AFTER 8/74	RPTL 480-a	4	240,646	0.08
Total Exemptions Exclusive of System Exemptions:				42,777,799	13.96
Total System Exemptions:				0	0.00
Totals:				42,777,799	13.96

Values have been equalized using the Uniform Percentage of Value. The Exempt amounts do not take into consideration, payments in lieu of taxes or other payments for municipal services.

Amount, if any, attributable to payments in lieu of taxes: \_\_\_\_\_

Equalized Total Assessed Value 165,852,211

School District - 382001 Berlin CSD

Exemption Code	Exemption Name	Statutory Authority	Number of Exemptions	Total Equalized Value of Exemptions	Percent of Value Exempted
12100	NYS - GENERALLY	RPTL 404(1)	1	194,211	0.12
13100	CO - GENERALLY	RPTL 406(1)	1	7,632	0.00
13500	TOWN - GENERALLY	RPTL 406(1)	7	3,665,264	2.21
13870	SPEC DIST USED FOR PURPOSE EST	RPTL 410	1	531,842	0.32
14110	USA - SPECIFIED USES	STATE L 54	1	453,947	0.27
25110	NONPROF CORP - RELIG(CONST PRO	RPTL 420-a	2	1,519,473	0.92
25300	NONPROF CORP - SPECIFIED USES	RPTL 420-b	3	500,000	0.30
25600	NONPROFIT HEALTH MAINTENANCE O	RPTL 486-a	1	228,947	0.14
27350	PRIVATELY OWNED CEMETERY LAND	RPTL 446	5	251,579	0.15
41130	ALT VET EX-WAR PERIOD-COMBAT	RPTL 458-a	2	0	0.00
41140	ALT VET EX-WAR PERIOD-DISABIL	RPTL 458-a	2	0	0.00
41400	CLERGY	RPTL 460	1	3,947	0.00
41700	AGRICULTURAL BUILDING	RPTL 483	4	262,368	0.16
41720	AGRICULTURAL DISTRICT	AG-MKTS L 305	13	666,511	0.40
41800	PERSONS AGE 65 OR OVER	RPTL 467	19	1,919,949	1.16
41804	PERSONS AGE 65 OR OVER	RPTL 467	9	477,721	0.29
41834	ENHANCED STAR	RPTL 425	111	11,345,815	6.84
41854	BASIC STAR 1999-2000	RPTL 425	107	3,950,547	2.38
41930	DISABILITIES AND LIMITED INCOM	RPTL 459-c	2	108,916	0.07
47450	FOREST/REF LAND - FISHER ACT	RPTL 480	1	184,632	0.11
47460	FOREST LAND CERTD AFTER 8/74	RPTL 480-a	4	271,647	0.16
Total Exemptions Exclusive of System Exemptions:				26,544,948	16.01
Total System Exemptions:				0	0.00
Totals:				26,544,948	16.01

Values have been equalized using the Uniform Percentage of Value. The Exempt amounts do not take into consideration, payments in lieu of taxes or other payments for municipal services.

Amount, if any, attributable to payments in lieu of taxes:

Equalized Total Assessed Value 31,810,494

School District - 382001 Berlin CSD

Exemption Code	Exemption Name	Statutory Authority	Number of Exemptions	Total Equalized Value of Exemptions	Percent of Value Exempted
13100	CO - GENERALLY	RPTL 406(1)	3	90,384	0.28
25110	NONPROF CORP - RELIG(CONST PRO	RPTL 420-a	1	94,872	0.30
25300	NONPROF CORP - SPECIFIED USES	RPTL 420-b	1	71,795	0.23
27350	PRIVATELY OWNED CEMETERY LAND	RPTL 446	1	26,923	0.08
41630	VOL/FIRE/AMB	RPTL 466-a	2	48,994	0.15
41730	AGRIC LAND-INDIV NOT IN AG DIS	AG MKTS L 306	4	56,905	0.18
41800	PERSONS AGE 65 OR OVER	RPTL 467	3	247,116	0.78
41834	ENHANCED STAR	RPTL 425	13	1,183,658	3.72
41854	BASIC STAR 1999-2000	RPTL 425	26	829,998	2.61
47460	FOREST LAND CERTD AFTER 8/74	RPTL 480-a	2	150,256	0.47

Total Exemptions Exclusive of System Exemptions:

2,800,901 8.80

Total System Exemptions:

0 0.00

Totals:

2,800,901 8.80

Values have been equalized using the Uniform Percentage of Value. The Exempt amounts do not take into consideration, payments in lieu of taxes or other payments for municipal services.

Amount, if any, attributable to payments in lieu of taxes:

Equalized Total Assessed Value 316,375,970

School District - 382001 Berlin CSD

Exemption Code	Exemption Name	Statutory Authority	Number of Exemptions	Total Equalized Value of Exemptions	Percent of Value Exempted
12100	NYS - GENERALLY	RPTL 404(1)	1	51,056	0.02
13100	CO - GENERALLY	RPTL 406(1)	2	475,108	0.15
13500	TOWN - GENERALLY	RPTL 406(1)	4	1,314,820	0.42
13800	SCHOOL DISTRICT	RPTL 408	1	34,532	0.01
13870	SPEC DIST USED FOR PURPOSE EST	RPTL 410	1	532,374	0.17
25110	NONPROF CORP - RELIG/CONST PRO	RPTL 420-a	7	958,561	0.30
25300	NONPROF CORP - SPECIFIED USES	RPTL 420-b	1	55,683	0.02
26100	VETERANS ORGANIZATION	RPTL 452	1	187,050	0.06
26250	HISTORICAL SOCIETY	RPTL 444	1	87,770	0.03
26400	INC VOLUNTEER FIRE CO OR DEPT	RPTL 464(2)	2	755,684	0.24
27350	PRIVATELY OWNED CEMETERY LAND	RPTL 446	4	30,216	0.01
29350	TRUSTEES - HOSP, LIB, PLAYGROU	RPTL 438	1	230,216	0.07
41130	ALT VET EX-WAR PERIOD-COMBAT	RPTL 458-a	1	0	0.00
41700	AGRICULTURAL BUILDING	RPTL 483	2	36,978	0.01
41720	AGRICULTURAL DISTRICT	AG-MKTS L 305	54	5,614,372	1.77
41800	PERSONS AGE 65 OR OVER	RPTL 467	32	3,073,423	0.97
41806	PERSONS AGE 65 OR OVER	RPTL 467	9	285,964	0.09
41834	ENHANCED STAR	RPTL 425	130	11,810,461	3.73
41854	BASIC STAR 1999-2000	RPTL 425	187	6,255,711	1.98
41930	DISABILITIES AND LIMITED INCOM	RPTL 459-c	2	202,159	0.06
47450	FOREST/REF LAND - FISHER ACT	RPTL 480	9	692,180	0.22
47460	FOREST LAND CERTD AFTER 8/74	RPTL 480-a	1	116,918	0.04

Equalized Total Assessed Value 323,095,931

School District - 382001 Berlin CSD

Exemption Code	Exemption Name	Statutory Authority	Number of Exemptions	Total Equalized Value of Exemptions	Percent of Value Exempted
12100	NYS - GENERALLY	RPTL 404(1)	5	418,759	0.13
13100	CO - GENERALLY	RPTL 406(1)	4	748,965	0.23
13500	TOWN - GENERALLY	RPTL 406(1)	7	2,258,904	0.70
13510	TOWN - CEMETERY LAND	RPTL 446	1	15,862	0.00
13800	SCHOOL DISTRICT	RPTL 408	3	47,333,794	14.65
13870	SPEC DIST USED FOR PURPOSE EST	RPTL 410	2	120,690	0.04
25110	NONPROF CORP - RELIG(CONST PRO	RPTL 420-a	7	3,698,967	1.14
25300	NONPROF CORP - SPECIFIED USES	RPTL 420-b	4	295,158	0.09
26400	INC VOLUNTEER FIRE CO OR DEPT	RPTL 464(2)	3	1,628,827	0.50
27350	PRIVATELY OWNED CEMETERY LAND	RPTL 446	6	50,207	0.02
29350	TRUSTEES - HOSP, LIB, PLAYGROU	RPTL 438	1	392,414	0.12
41400	CLERGY	RPTL 460	1	10,345	0.00
41700	AGRICULTURAL BUILDING	RPTL 483	1	1,189,655	0.37
41720	AGRICULTURAL DISTRICT	AG-MKTS L 305	26	2,095,537	0.65
41730	AGRIC LAND-INDIV NOT IN AG DIS	AG MKTS L 306	4	604,579	0.19
41800	PERSONS AGE 65 OR OVER	RPTL 467	37	3,456,998	1.07
41824	LIVING QUARTERS FOR PARENTS AN	RPTL 469	1	83,248	0.03
41834	ENHANCED STAR	RPTL 425	103	10,233,792	3.17
41854	BASIC STAR 1999-2000	RPTL 425	184	7,448,872	2.31
41935	DISABILITIES AND LIMITED INCOM	RPTL 459-c	2	86,986	0.03
42100	SILOS, MANURE STORAGE TANKS,	RPTL 483-a	2	82,069	0.03
47460	FOREST LAND CERTD AFTER 8/74	RPTL 480-a	16	1,334,485	0.41

Equalized Total Assessed Value 323,095,931

School District - 382001 Berlin CSD

Exemption Code	Exemption Name	Statutory Authority	Number of Exemptions	Total Equalized Value of Exemptions	Percent of Value Exempted
47610	BUSINESS INVESTMENT PROPERTY P	RPTL 485-b	4	1,034,310	0.32
Total Exemptions Exclusive of System Exemptions:				84,623,423	26.19
Total System Exemptions:				0	0.00
Totals:				84,623,423	26.19

Values have been equalized using the Uniform Percentage of Value. The Exempt amounts do not take into consideration, payments in lieu of taxes or other payments for municipal services.

Amount, if any, attributable to payments in lieu of taxes: \_\_\_\_\_

Equalized Total Assessed Value 306,469,472

School District - 382001 Berlin CSD

Exemption Code	Exemption Name	Statutory Authority	Number of Exemptions	Total Equalized Value of Exemptions	Percent of Value Exempted
12100	NYS - GENERALLY	RPTL 404(1)	8	6,548,166	2.14
13100	CO - GENERALLY	RPTL 406(1)	7	848,000	0.28
13500	TOWN - GENERALLY	RPTL 406(1)	8	2,546,157	0.83
13510	TOWN - CEMETERY LAND	RPTL 446	1	667	0.00
13800	SCHOOL DISTRICT	RPTL 408	1	42,500	0.01
25110	NONPROF CORP - RELIG(CONST PRO	RPTL 420-a	6	3,428,667	1.12
25300	NONPROF CORP - SPECIFIED USES	RPTL 420-b	21	4,930,334	1.61
26400	INC VOLUNTEER FIRE CO OR DEPT	RPTL 464(2)	3	842,499	0.27
27350	PRIVATELY OWNED CEMETERY LAND	RPTL 446	9	18,833	0.01
29350	TRUSTEES - HOSP, LIB, PLAYGROU	RPTL 438	1	253,333	0.08
41130	ALT VET EX-WAR PERIOD-COMBAT	RPTL 458-a	3	0	0.00
41140	ALT VET EX-WAR PERIOD-DISABILI	RPTL 458-a	3	0	0.00
41150	COLD WAR VETERANS (10%)	RPTL 458-b	2	0	0.00
41400	CLERGY	RPTL 460	3	7,500	0.00
41700	AGRICULTURAL BUILDING	RPTL 483	4	187,501	0.06
41720	AGRICULTURAL DISTRICT	AG-MKTS L 305	2	111,670	0.04
41800	PERSONS AGE 65 OR OVER	RPTL 467	24	2,873,215	0.94
41804	PERSONS AGE 65 OR OVER	RPTL 467	5	126,530	0.04
41834	ENHANCED STAR	RPTL 425	137	12,544,885	4.09
41854	BASIC STAR 1998-2000	RPTL 425	205	6,932,485	2.26
41930	DISABILITIES AND LIMITED INCOM	RPTL 459-c	5	294,201	0.10

Equalized Total Assessed Value 306,469,472

School District - 382001 Berlin CSD

Exemption Code	Exemption Name	Statutory Authority	Number of Exemptions	Total Equalized Value of Exemptions	Percent of Value Exempted
47460	FOREST LAND CERTD.AFTER 8/74	RPTL 480-a	4	240,646	0.08
Total Exemptions Exclusive of System Exemptions:				42,777,799	13.96
Total System Exemptions:				0	0.00
Totals:				42,777,799	13.96

Values have been equalized using the Uniform Percentage of Value. The Exempt amounts do not take into consideration, payments in lieu of taxes or other payments for municipal services.

Amount, if any, attributable to payments in lieu of taxes: \_\_\_\_\_

Equalized Total Assessed Value 165,852,211

School District - 382001 Berlin CSD

Exemption Code	Exemption Name	Statutory Authority	Number of Exemptions	Total Equalized Value of Exemptions	Percent of Value Exempted	
12100	NYS - GENERALLY	RPTL 404(1)	1	194,211	0.12	
13100	CO - GENERALLY	RPTL 406(1)	1	7,632	0.00	
13500	TOWN - GENERALLY	RPTL 406(1)	7	3,665,264	2.21	
13870	SPEC DIST USED FOR PURPOSE EST	RPTL 410	1	531,842	0.32	
14110	USA - SPECIFIED USES	STATE L 54	1	453,947	0.27	
25110	NONPROF CORP - RELIG(CONST PRO	RPTL 420-a	2	1,519,473	0.92	
25300	NONPROF CORP - SPECIFIED USES	RPTL 420-b	3	500,000	0.30	
25600	NONPROFIT HEALTH MAINTENANCE O	RPTL 486-a	1	228,947	0.14	
27350	PRIVATELY OWNED CEMETERY LAND	RPTL 446	5	251,579	0.15	
41130	ALT VET EX-WAR PERIOD-COMBAT	RPTL 458-a	2	0	0.00	
41140	ALT VET EX-WAR PERIOD-DISABILI	RPTL 458-a	2	0	0.00	
41400	CLERGY	RPTL 460	1	3,947	0.00	
41700	AGRICULTURAL BUILDING	RPTL 483	4	262,368	0.16	
41720	AGRICULTURAL DISTRICT	AG-MKTS L 305	13	666,511	0.40	
41800	PERSONS AGE 65 OR OVER	RPTL 467	19	1,919,949	1.16	
41804	PERSONS AGE 65 OR OVER	RPTL 467	9	477,721	0.29	
41834	ENHANCED STAR	RPTL 425	111	11,345,815	6.84	
41854	BASIC STAR 1999-2000	RPTL 425	107	3,950,547	2.38	
41930	DISABILITIES AND LIMITED INCOM	RPTL 459-c	2	108,916	0.07	
47450	FOREST/REF LAND - FISHERACT	RPTL 480	1	184,632	0.11	
47460	FOREST LAND CERTD AFTER 8/74	RPTL 480-a	4	271,647	0.16	
Total Exemptions Exclusive of System Exemptions:				297	26,544,948	16.01
Total System Exemptions:				0	0	0.00
Totals:				297	26,544,948	16.01

Values have been equalized using the Uniform Percentage of Value. The Exempt amounts do not take into consideration, payments in lieu of taxes or other payments for municipal services.

Amount, if any, attributable to payments in lieu of taxes:

Equalized Total Assessed Value 31,810,494

School District - 382001 Berlin CSD

Exemption Code	Exemption Name	Statutory Authority	Number of Exemptions	Total Equalized Value of Exemptions	Percent of Value Exempted
13100	CO - GENERALLY	RPTL 406(1)	3	90,384	0.28
25110	NONPROF CORP - RELIG(CONST PRO	RPTL 420-a	1	94,872	0.30
25300	NONPROF CORP - SPECIFIED USES	RPTL 420-b	1	71,795	0.23
27350	PRIVATELY OWNED CEMETERY LAND	RPTL 446	1	26,923	0.08
41630	VOL/FIRE/AI/MB	RPTL 466-a	2	48,994	0.15
41730	AGRIC LAND-INDIV NOT IN AG DIS	AG MKTS L 306	4	56,905	0.18
41800	PERSONS AGE 65 OR OVER	RPTL 467	3	247,116	0.78
41834	ENHANCED STAR	RPTL 425	13	1,183,658	3.72
41854	BASIC STAR 1999-2000	RPTL 425	26	829,998	2.61
47460	FOREST LAND CERTD AFTER 8/74	RPTL 480-a	2	150,256	0.47
<b>Total Exemptions Exclusive of System Exemptions:</b>				<b>2,800,901</b>	<b>8.80</b>
<b>Total System Exemptions:</b>				<b>0</b>	<b>0.00</b>
<b>Totals:</b>				<b>2,800,901</b>	<b>8.80</b>

Values have been equalized using the Uniform Percentage of Value. The Exempt amounts do not take into consideration, payments in lieu of taxes or other payments for municipal services.

Amount, if any, attributable to payments in lieu of taxes: \_\_\_\_\_

Equalized Total Assessed Value 316,375,970

School District - 382001 Berlin CSD

Exemption Code	Exemption Name	Statutory Authority	Number of Exemptions	Total Equalized Value of Exemptions	Percent of Value Exempted
12100	NYS - GENERALLY	RPTL 404(1)	1	51,056	0.02
13100	CO - GENERALLY	RPTL 406(1)	2	475,108	0.15
13500	TOWN - GENERALLY	RPTL 406(1)	4	1,314,820	0.42
13800	SCHOOL DISTRICT	RPTL 408	1	34,532	0.01
13870	SPEC DIST USED FOR PURPOSE EST	RPTL 410	1	532,374	0.17
25110	NONPROF CORP - RELIG(CONST PRO	RPTL 420-a	7	958,561	0.30
25300	NONPROF CORP - SPECIFIED USES	RPTL 420-b	1	55,683	0.02
26100	VETERANS ORGANIZATION	RPTL 452	1	187,050	0.06
26250	HISTORICAL SOCIETY	RPTL 444	1	87,770	0.03
26400	INC VOLUNTEER FIRE CO OR DEPT	RPTL 464(2)	2	755,684	0.24
27350	PRIVATELY OWNED CEMETERY LAND	RPTL 446	4	30,216	0.01
29350	TRUSTEES - HOSP, LIB, PLAYGROU	RPTL 438	1	230,216	0.07
41130	ALT VET EX-WAR PERIOD-COMBAT	RPTL 458-a	1	0	0.00
41700	AGRICULTURAL BUILDING	RPTL 483	2	36,978	0.01
41720	AGRICULTURAL DISTRICT	AG-MKTS L 305	54	5,614,372	1.77
41800	PERSONS AGE 65 OR OVER	RPTL 467	32	3,073,423	0.97
41806	PERSONS AGE 65 OR OVER	RPTL 467	9	285,964	0.09
41834	ENHANCED STAR	RPTL 425	130	11,810,461	3.73
41854	BASIC STAR 1999-2000	RPTL 425	187	6,255,711	1.98
41930	DISABILITIES AND LIMITED INCOM	RPTL 459-c	2	202,159	0.06
47450	FOREST/REF LAND - FISHER ACT	RPTL 480	9	692,180	0.22
47460	FOREST LAND CERTD AFTER 8/74	RPTL 480-a	1	116,918	0.04

Equalized Total Assessed Value 316,375,970

School District - 382001 Berlin CSD

Exemption Code	Exemption Name	Statutory Authority	Number of Exemptions	Total Equalized Value of Exemptions	Percent of Value Exempted
47610	BUSINESS INVESTMENT PROPERTY P	RPTL 485-b	1	58,993	0.02
Total Exemptions Exclusive of System Exemptions:				32,860,229	10.39
Total System Exemptions:				0	0.00
Totals:				32,860,229	10.39

Values have been equalized using the Uniform Percentage of Value. The Exempt amounts do not take into consideration, payments in lieu of taxes or other payments for municipal services.

Amount, if any, attributable to payments in lieu of taxes: \_\_\_\_\_