

Ability AdvantEdge Scholarship

One \$1000 Scholarship

A Golub Corporation and Our Ability, Inc. scholarship to champion opportunities for persons with disabilities

The Ability AdvantEdge Scholarship is awarded to a community member who:

- has enrolled, or has been accepted by an accredited 2-4 year college or university
- has a minimum college GPA of 3.0 or a minimum of a B- average in high school
- is involved in community service/volunteerism
- is a resident of a marketing area in which we operate
- is a person with a disability, defined as physical or mental impairment that substantially limits one or more major life activity.

To be eligible you must provide:

- Completed online application
- Copy (unofficial) of high school or college transcripts
- Activity profile/resume
- Summary Statement
How you have applied your abilities to overcome a significant challenge in your life (at least 200 words)

Thinking about continuing
your education?

Apply for the Scholarship AdvantEdge today!



For more information
about Price Chopper/Market 32
Scholarship programs, visit

www.pricechopper.com/scholarships



Get the
Scholarship
AdvantEdge

Corporate Scholarship Program



2021 PC/M32 Corporate Scholarships

The Ability AdvantEdge Scholarship

A Golub Corporation and Our Ability, Inc. Scholarship to champion opportunities for persons with disabilities

The Community AdvantEdge Scholarship

A Golub Corporation Scholarship for the Price Chopper/Market 32 community, presented Neil Golub and in memory of Jane Golub

The Entrepreneurial AdvantEdge Scholarship

A Golub Corporation Scholarship to recognize entrepreneurial spirit, in memory of Lewis Golub

The Diversity AdvantEdge Scholarship

A Golub Corporation Scholarship for minority teammates

The Teammate AdvantEdge Scholarship

A Golub Corporation Scholarship for Price Chopper/Market 32 teammates

Teammate AdvantEdge Scholarships

\$2000 Scholarships

Golub Corporation Scholarships for part-time and full-time Price Chopper/Market 32 teammates.

The Teammate AdvantEdge Scholarship is awarded annually to part-time or full-time Price Chopper/Market 32 teammates who:

- are enrolled, or have been accepted to an accredited 2-4 year college or university
- have a minimum college GPA of 3.0 or a minimum of a B- average in high school
- have a Performance Appraisal of 3.0 or higher
- are active Price Chopper/Market 32 teammates
- are involved in community service

To be eligible you must provide:

- Completed online application
- Copy (unofficial) of high school or college transcripts
- Activity profile or resume
This profile must include honors/awards, participation in school/extracurricular, civic and/or leadership activities.
- Summary Statement
State your most significant lifetime achievement (at least 200 words)

Community AdvantEdge Scholarship

One \$5000 Scholarship

A Golub Corporation Scholarship for the Price Chopper/Market 32 community, presented by Neil Golub and in memory of Jane Golub.

The Community AdvantEdge Scholarship is awarded annually to a graduating high school senior who has been accepted to a 2-4 year accredited college/university as a Business major. This scholarship will be awarded to either: an active Price Chopper/Market 32 teammate, or the child/grandchild of an active, retired or deceased Price Chopper/Market 32 teammate, or Price Chopper/Market 32 Trade Partner.

To be eligible you must provide:

- Completed online application
- Minimum B- average (high school)
- Copy (unofficial) of high school transcripts
- Activity profile or resume
This profile must include honors/awards, participation in school/extracurricular, civic and/or leadership activities.
- Summary Statement
State your most significant community oriented contribution (at least 200 words)

Entrepreneurial AdvantEdge Scholarship

One \$5000 Scholarship

A Golub Corporation Scholarship to recognize entrepreneurial spirit, in memory of Lewis Golub.

The Entrepreneurial AdvantEdge Scholarship is awarded annually to a graduating high school senior who has been accepted to a 2-4 year accredited college/university as a Business major. The candidate should have volunteer/community leadership/entrepreneurial involvement and be a resident of the marketing areas in which we operate.

To be eligible you must provide:

- Completed online application
- Minimum B- average (high school)
- Copy (unofficial) of high school transcripts
- Activity profile or resume
This profile must include honors/awards, participation in school/extracurricular, civic, entrepreneurial and/or leadership activities.
- Summary Statement
State your most significant entrepreneurial achievement (at least 200 words)

Diversity AdvantEdge Scholarships

\$2000 Scholarships

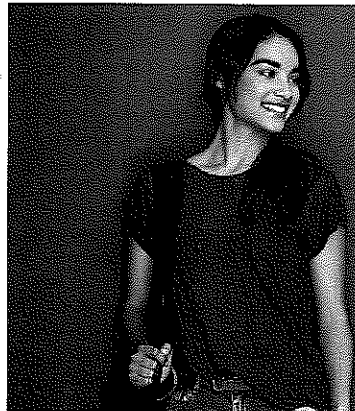
Golub Corporation Scholarships for minority teammates.

The Diversity AdvantEdge Scholarship is awarded annually to part-time or full-time Price Chopper/Market 32 teammates who:

- are enrolled, or have been accepted to an accredited 2-4 year college or university
- have a minimum college GPA of 3.0 or a minimum of a B- average in high school
- have a Performance Appraisal of 3.0 or higher
- are active Price Chopper/Market 32 teammates
- are a person of color, member of the LGBTQ community, a veteran or other minority group

To be eligible you must provide:

- Completed online application
- Copy (unofficial) of high school or college transcripts
- Activity profile or resume
This profile must include honors/awards, participation in school/extracurricular, civic and/or leadership activities.
- Summary Statement
State your most significant lifetime achievement (at least 200 words)



Visit www.pricechopper.com/scholarships for application deadline/to apply
Get the Scholarship AdvantEdge and continue your education.